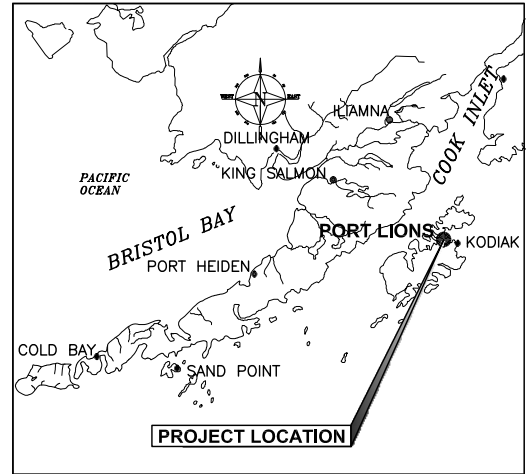
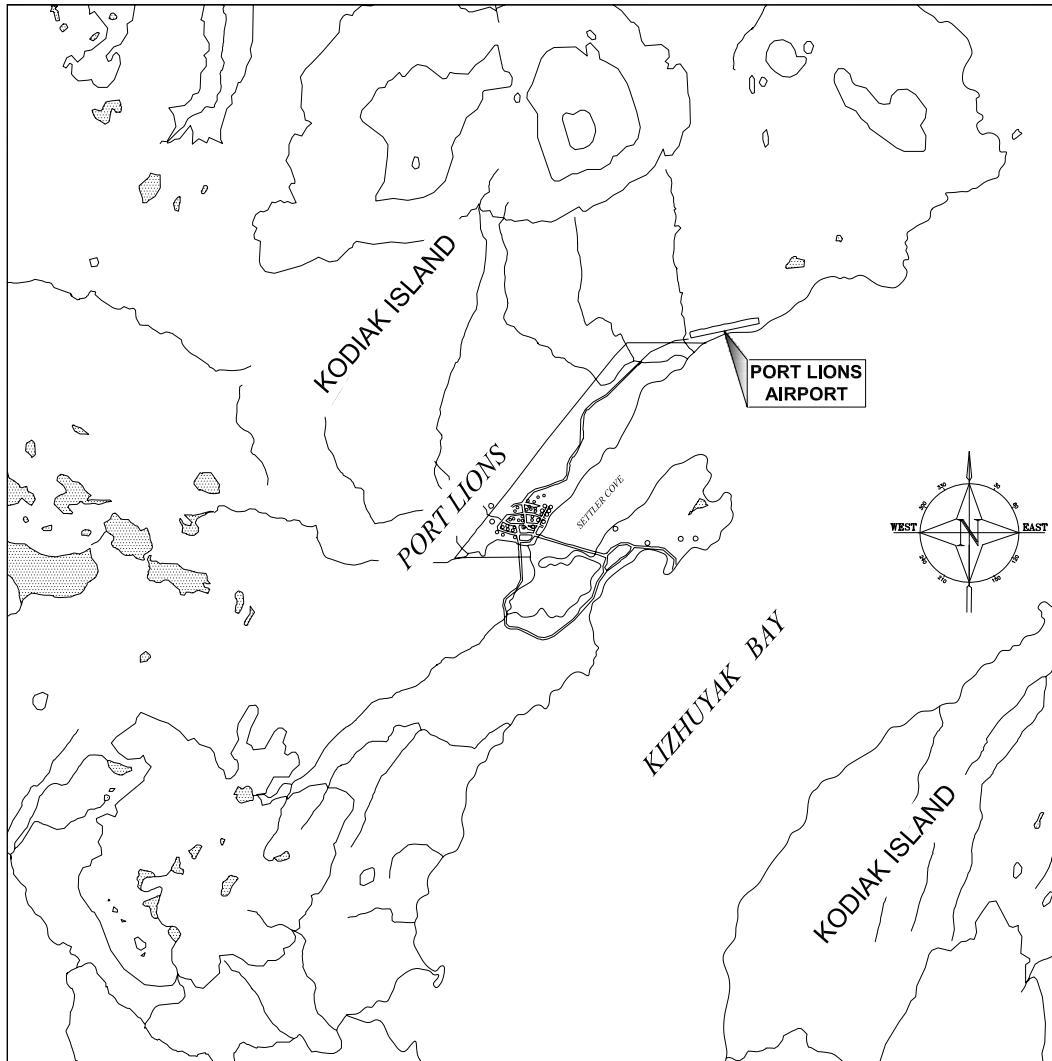


KEY MAP



LOCATION MAP



VICINITY MAP

Figure 1

WATER BODIES:
KIZHUYAK BAY, SETTLER COVE, MARMOT BAY

KEY AND REGIONAL MAPS

APPLICATION BY:
ALASKA STATE DEPT. OF TRANSPORTATION
AND PUBLIC FACILITIES
SOUTHCOST REGION

PORT LIONS AIRPORT IMPROVEMENTS
PROJECT NO. Z527960000

AT: PORT LIONS, ALASKA
LOCATED IN: TOWNSHIP 26S, RANGE 22W, SECTION 33/34,
SEWARD MERIDIAN

DATE: FEBRUARY 2019

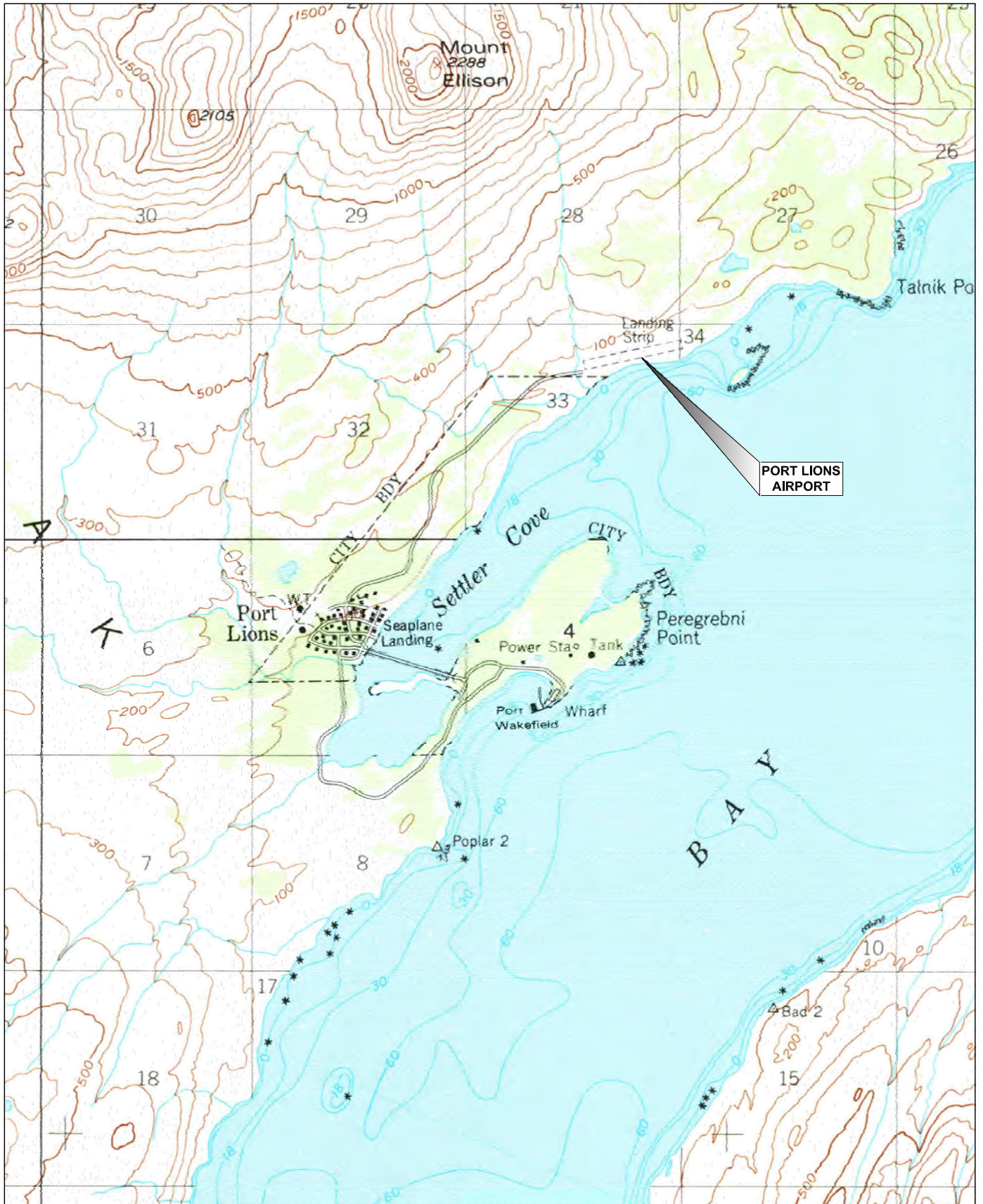


Figure 2

WATER BODIES:
KIZHUYAK BAY, SETTLER COVE, MARMOT BAY

TOPOGRAPHIC MAP

APPLICATION BY:
ALASKA STATE DEPT. OF TRANSPORTATION
AND PUBLIC FACILITIES
SOUTHCOST REGION

PORT LIONS AIRPORT IMPROVEMENTS
PROJECT NO. Z527960000

AT: PORT LIONS, ALASKA
LOCATED IN: TOWNSHIP 26S, RANGE 22W, SECTION 33/34,
SEWARD MERIDIAN

DATE: FEBRUARY 2019

FILE C:\kdk\52796\EN\docs\environmental\52796 - Project Scoping no labels V2019.dwg DATE 2/15/2019 10:21 LAYOUT DESIGNED T.F., P.J. CHECKED C. TRIPP DRAFTED T.F., P.J.

NO.	DATE	REVISION	STATE	PROJECT DESIGNATION	YEAR	SHEET NO.	TOTAL SHEETS
			ALASKA	Z52796000	2019	1	1



PROPOSED AIRPORT PROPERTY BOUNDARY

STATE OF ALASKA DEPARTMENT OF TRANSPORTATION
AND PUBLIC FACILITIES
6860 GLACIER HIGHWAY, JUNEAU, AK 99811

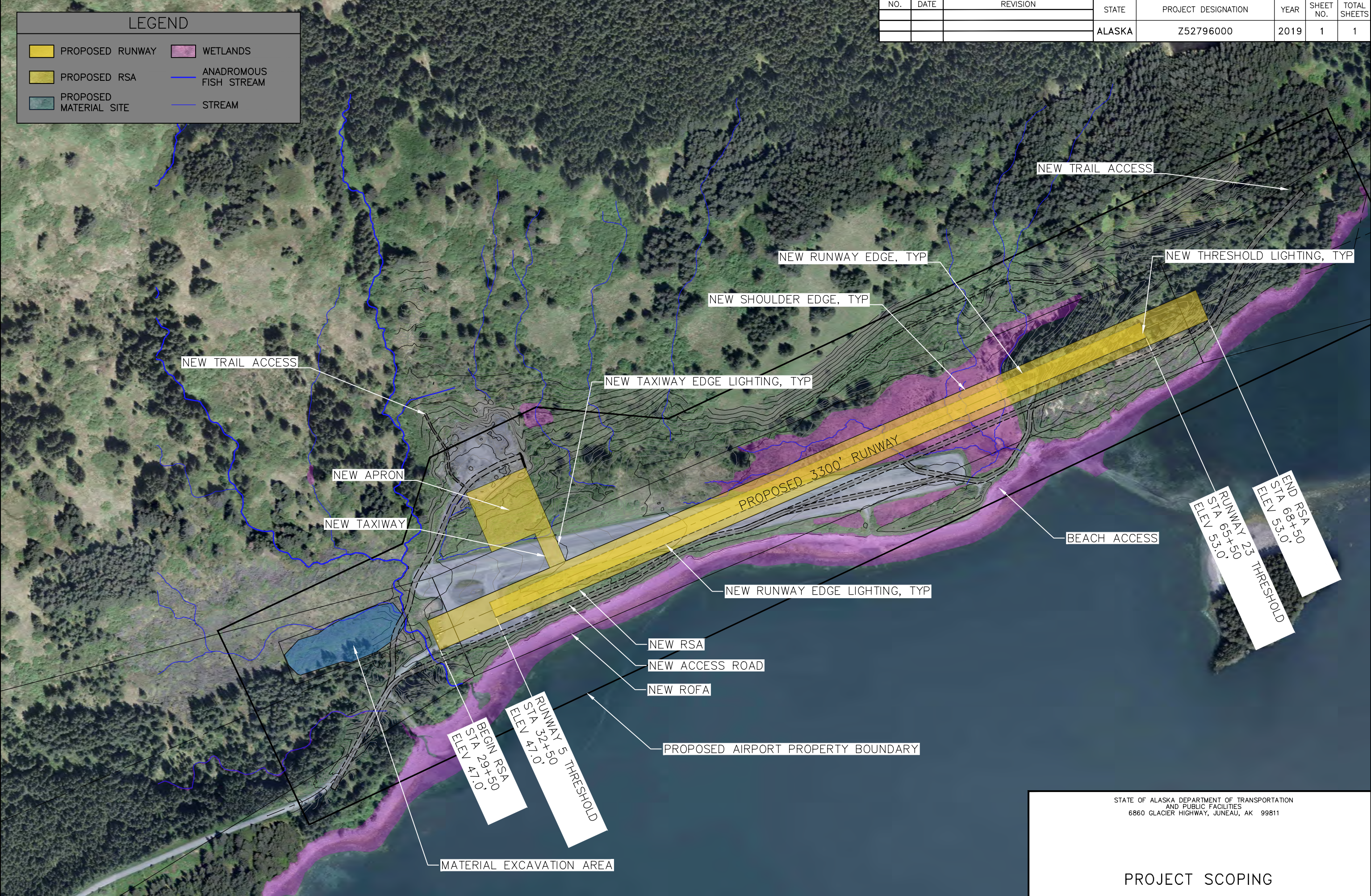
PROJECT SCOPING

NO.	DATE	REVISION	STATE	PROJECT DESIGNATION	YEAR	SHEET NO.	TOTAL SHEETS
			ALASKA	Z52796000	2019	1	1

LEGEND

- PROPOSED RUNWAY
- PROPOSED RSA
- PROPOSED MATERIAL SITE
- WETLANDS
- ANADROMOUS FISH STREAM
- STREAM

FILE: Q:\vdk\52796\EN\docs\environmental\52796 - Project Scoping\2019.dwg
 DATE: 2/15/2019 10:16
 LAYOUT: T.F., P.J.
 CHECKED: C. TRIPP
 DRAFTED: T.F., P.J.



STATE OF ALASKA DEPARTMENT OF TRANSPORTATION
 AND PUBLIC FACILITIES
 6860 GLACIER HIGHWAY, JUNEAU, AK 99811

PROJECT SCOPING