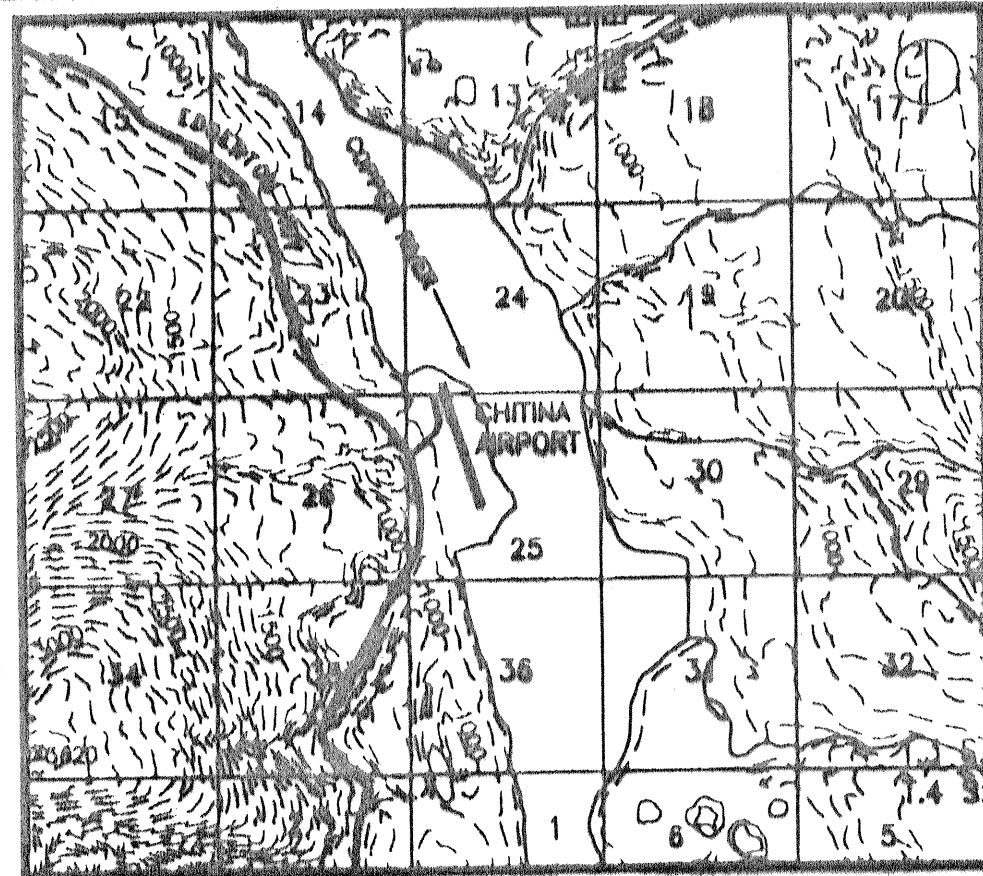
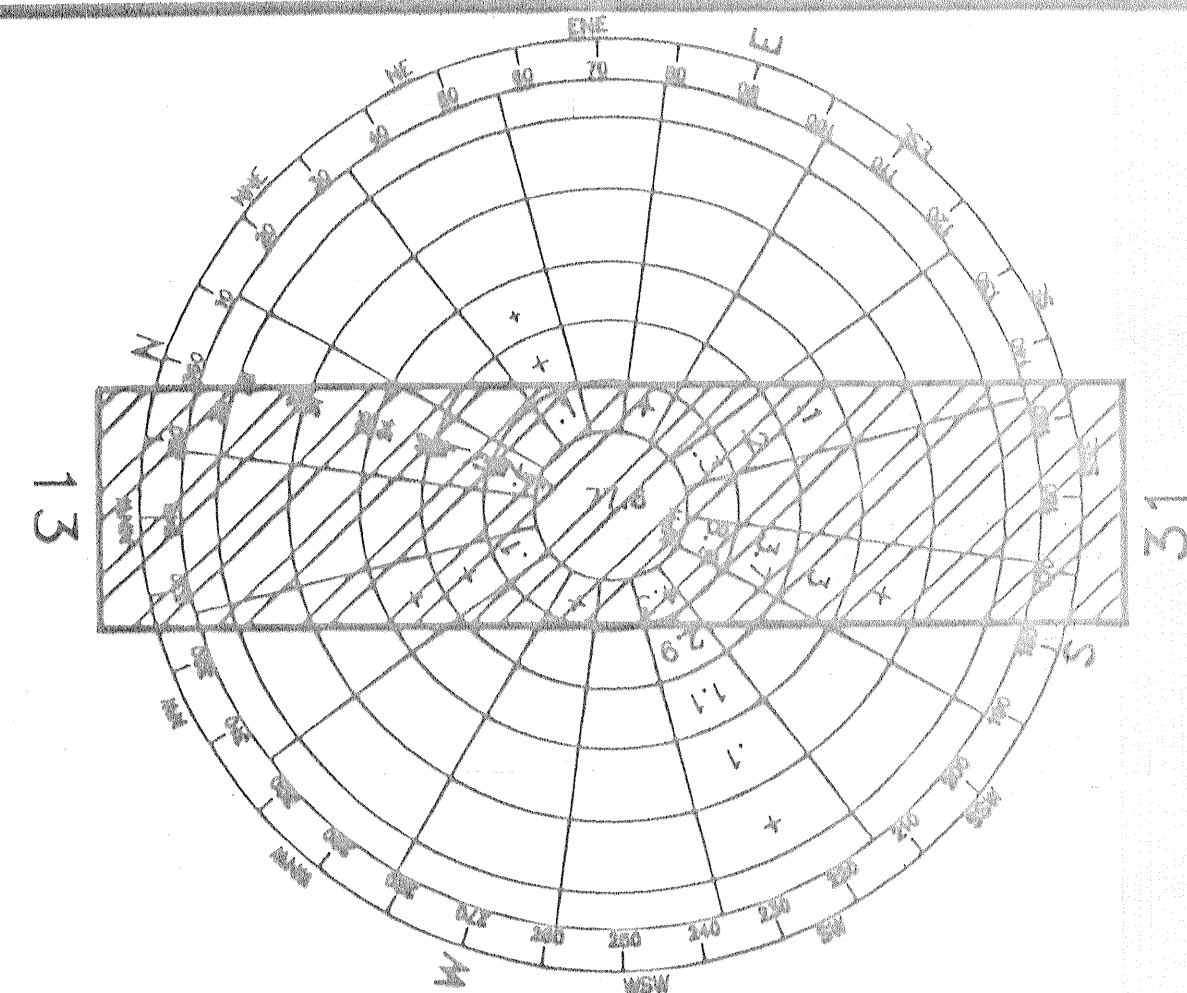


LOCATION MAP  
NO SCALE



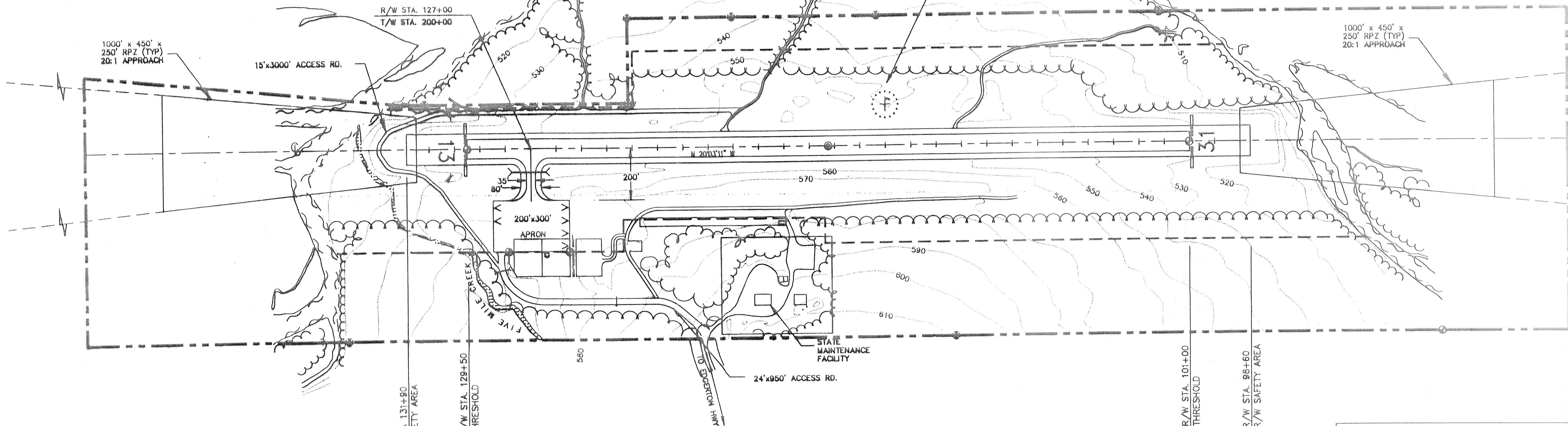
VICINITY MAP  
COPPER RIVER MERIDIAN  
U.S.G.S. VALDEZ B-2 & C-2  
SCALE 1"=1 Mile

WIND ROSE  
SOURCE: AEIDC  
CHITINA AIRPORT  
PERIOD: 6/39 - 4/44  
COVERAGE: 95%



COPPER RIVER

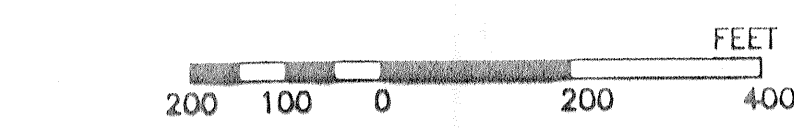
UNLIGHTED WIND CONE  
AND SEGMENTED CIRCLE  
R/W STA. 113+00, 200' RT.



- NOTES:
1. CONTOUR INTERVAL IS 10 FEET.
  2. THE FOLLOWING FEATURES PENETRATE PART 77 7:1 TRANSITIONAL SURFACE:
    - STATE MAINTENANCE FACILITY
    - PROPOSED CONSTRUCTED BACKSLOPE LEFT RUNWAY CENTERLINE FROM STA. 105+00 - 126+50
 THERE ARE NO PLANS TO ELIMINATE THESE FEATURES IN THE FUTURE.
  3. PORTIONS OF THE EDGERTON HWY NEAR MILE 28 PENETRATE PART 77 HORIZONTAL SURFACE. THERE ARE NO PLANS TO ELIMINATE THIS FEATURE IN THE FUTURE.

|                     | RUNWAY DATA  |              |
|---------------------|--------------|--------------|
|                     | EXISTING     | ULTIMATE     |
| EFFECTIVE GRADIENT  | 0.3508%      | 0.3508%      |
| % WIND COVERAGE     | 95%          | 95%          |
| INSTRUMENT RUNWAY   | N/A          | N/A          |
| RUNWAY SURFACE TYPE | GRAVEL       | GRAVEL       |
| PAVEMENT STRENGTH   | N/A          | N/A          |
| VISIBILITY MINIMUM  | ≥ 1 MILE     | ≥ 1 MILE     |
| RUNWAY LIGHTING     | NONE         | NONE         |
| RUNWAY MARKING      | N/A          | N/A          |
| NAVIGATION AIDS     | N/A          | N/A          |
| COMMUNICATION AIDS  | N/A          | N/A          |
| R/W DIMENSIONS      | 78' X 2850'  | 78' X 2850'  |
| R/W SAFETY AREA     | 120' X 3330' | 120' X 3330' |

|                                      | AIRPORT DATA         |          |
|--------------------------------------|----------------------|----------|
|                                      | EXISTING             | ULTIMATE |
| AIRPORT ELEVATION (GPS)              | 552'                 | 552'     |
| AIRPORT REFERENCE CODE               | A-1                  | A-1      |
| MEAN HIGH TEMP. HOTTEST MONTH (JULY) | 70°F                 | 70°F     |
| TAXIWAY LIGHTING                     | NONE                 | NONE     |
| RAMP LIGHTING                        | NONE                 | NONE     |
| AIRPORT AND TERMINAL NAVAIDS         | NONE                 | NONE     |
| AIRPORT REFERENCE POINT (ARP)        | LONG. 144°25'47.25"W |          |
| STA. 115+25                          | LAT. 61°34'59.53"N   |          |
| THRESHOLD 31                         | LONG. 144°25'37.15"W |          |
| STA. 101+00                          | LAT. 61°34'46.35"N   |          |
| THRESHOLD 13                         | LONG. 144°25'57.34"W |          |
| STA. 129+50                          | LAT. 61°30'12.71"N   |          |



| MODIFICATION TO STANDARD |          |                 |                 |
|--------------------------|----------|-----------------|-----------------|
| ITEM                     | STANDARD | EXISTING        | ULTIMATE        |
| PART 77 PRIMARY SURFACE  | 250'     | 250'            | 250'            |
| TRANSITIONAL SURFACE     | 7:1      | SEE NOTES 2 & 3 | SEE NOTES 2 & 3 |

| LEGEND                             |          |                     |
|------------------------------------|----------|---------------------|
|                                    | EXISTING | ULTIMATE            |
| PROPERTY LINE                      | ---      | ---                 |
| BUILDING RESTRICTION LINE (B.R.L.) | ---      | ---                 |
| DEVELOPMENT                        | ---      | ---                 |
| WIND CONE & SEGMENTED CIRCLE       | (Symbol) | SAME                |
| TREELINE                           | (Symbol) | SAME                |
| BUILDINGS                          | (Symbol) | SAME                |
| ROADWAYS                           | (Symbol) | SAME                |
| THRESHOLD MARKERS                  | (Symbol) | SAME                |
| AIRPORT REFERENCE POINT            | (Symbol) | SHORELINE/WATERLINE |
| THE DOWNS                          | (Symbol) | CULVERT             |
| SIGNS                              | (Symbol) | CONTOUR LINE        |
| BLM MONUMENT                       | (Symbol) |                     |
| SURVEY MONUMENT                    | (Symbol) |                     |

NAD ALASKA STATE PLANE GRID BEARING OF 13-31: N21°26'03"W DATA BASE CONTROL YEAR: NAD 83

|                    |      |           |  |
|--------------------|------|-----------|--|
| DESIGN <u>RS</u>   |      |           |  |
| DRAWN <u>CAT</u>   |      |           |  |
| CHECKED <u>RAL</u> |      |           |  |
| BY                 | DATE | REVISIONS |  |

STATE OF ALASKA  
DEPARTMENT OF TRANSPORTATION AND PUBLIC FACILITIES  
NORTHERN REGION-DESIGN AND CONSTRUCTION-AVIATION  
APPROVED Daniel D. Urbach DATE 9-10-97  
DANIEL D. URBACH, P.E. AIRPORT DESIGN ENGINEER

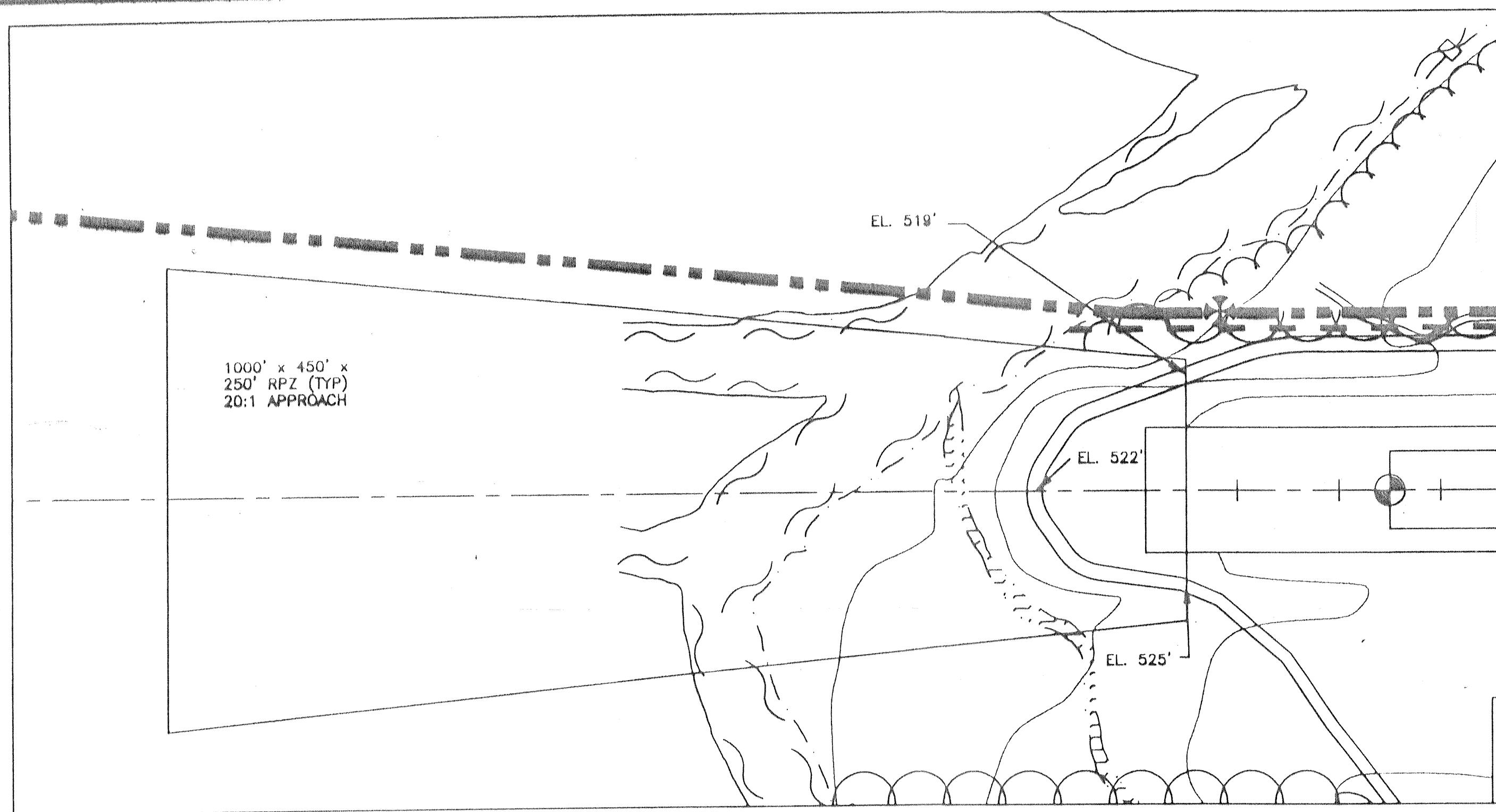
CONDITIONS APPROVED  
AIRPORT LAYOUT PLAN APPROVED  
By: Matthew S. ...  
FAA AIRPORTS DIVISION  
ALASKAN REGION, AAL-600  
DATE: 9/18/97

THIS ALP SUPERSEDES THE PREVIOUS ALP, WHICH WAS SIGNED BY RICHARD A. LEVINE ON 8/8/91, FAA APPROVED ON 8/30/91, AND UPDATED ON 7/9/93  
THIS ALP WAS PREPARED FROM THE PREVIOUS ALP AND FROM THE AS-BUILTS DATED 1993.

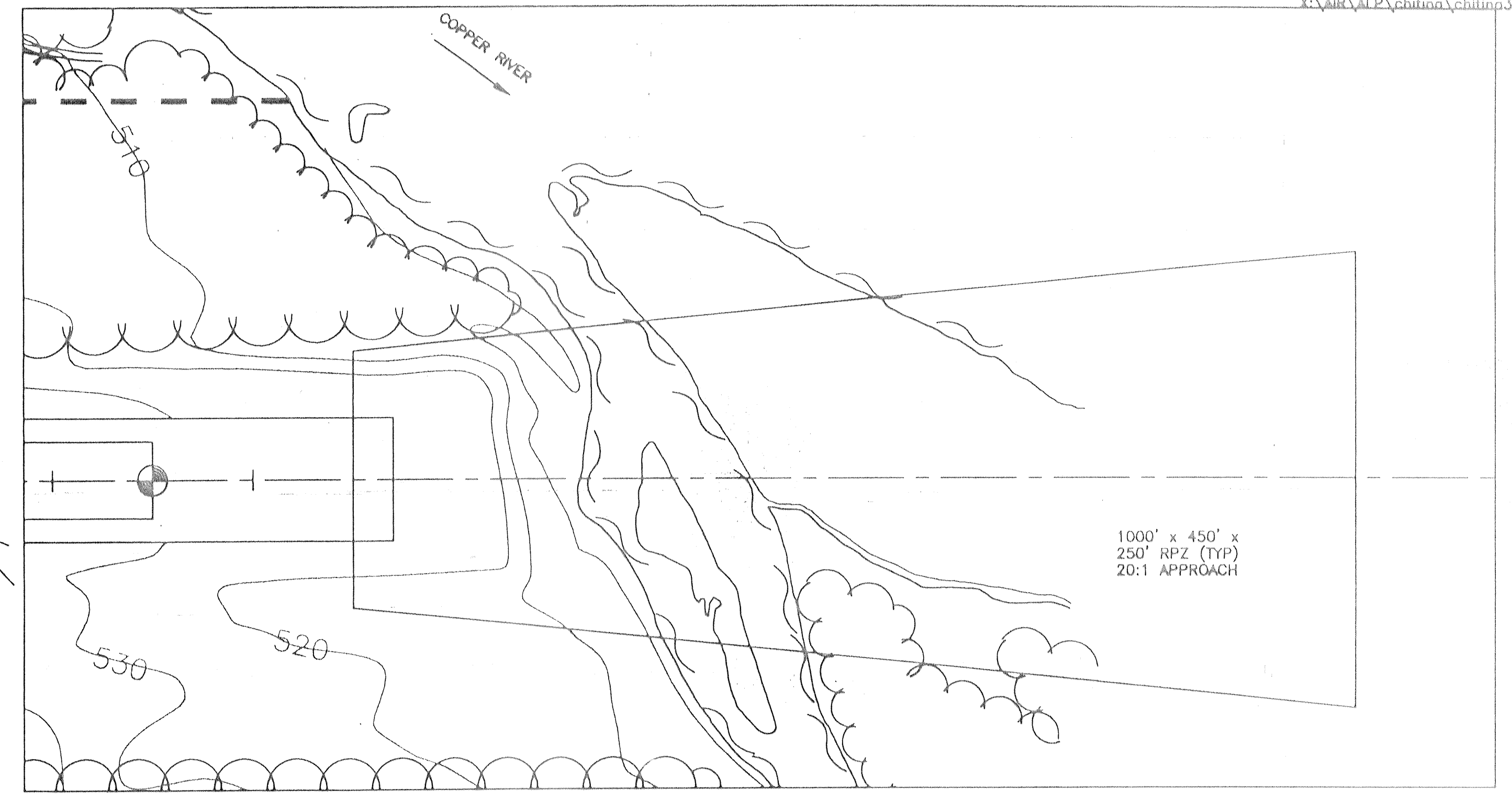
CHITINA AIRPORT  
AIRPORT LAYOUT PLAN

SHEET  
1 OF 3

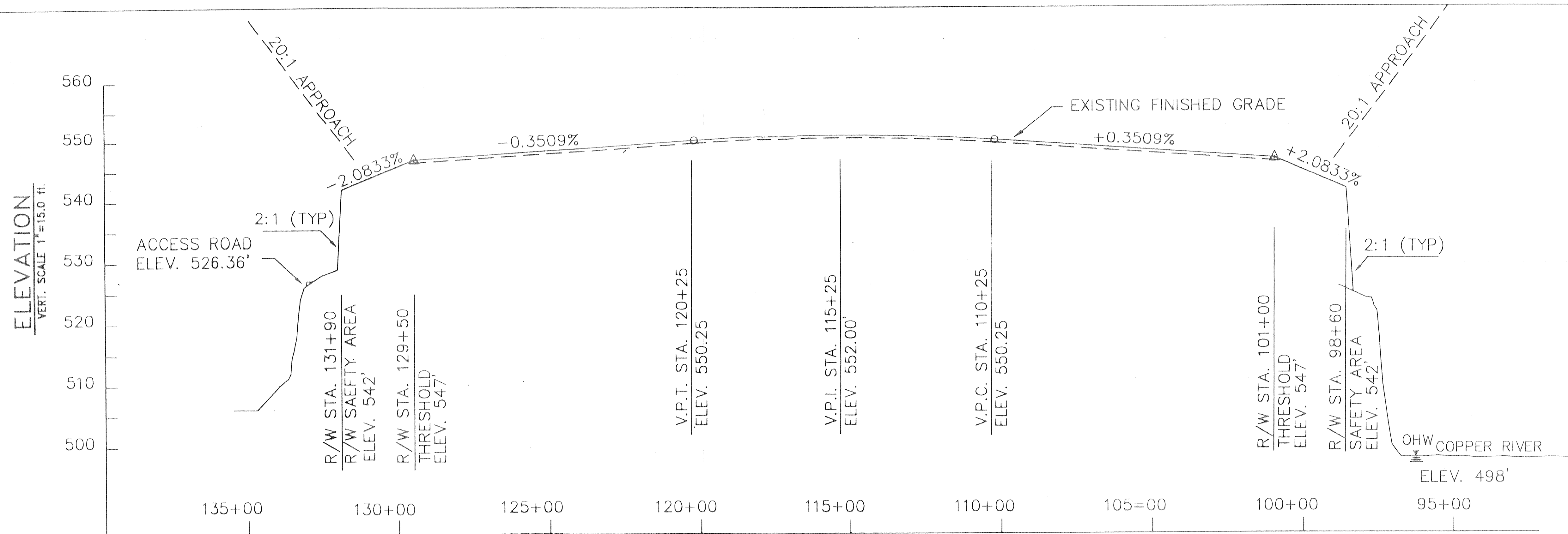
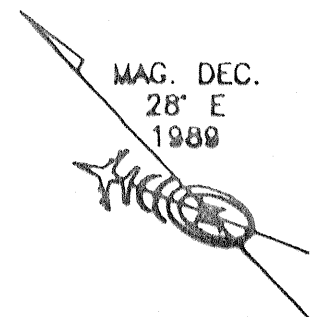




RPZ 13



RPZ 31



|         |     |
|---------|-----|
| DESIGN  | RS  |
| DRAWN   | GAT |
| CHECKED | ELE |

| BY | DATE | REVISIONS |
|----|------|-----------|
|    |      |           |
|    |      |           |
|    |      |           |

STATE OF ALASKA  
 DEPARTMENT OF TRANSPORTATION AND PUBLIC FACILITIES  
 NORTHERN REGION-DESIGN AND CONSTRUCTION-AVIATION  
 APPROVED *[Signature]* DATE 9-10-97  
 DANIEL D. URBACH, P.E. AIRPORT DESIGN GROUP CHIEF

LAYOUT PLAN Conditionally Approved:  
 By *[Signature]* MATT FREEMAN  
 AIRPORTS DIVISION, ALASKAN REGION  
 Date 9/18/97

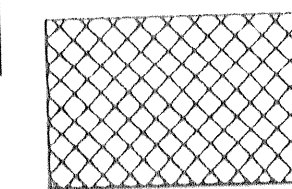
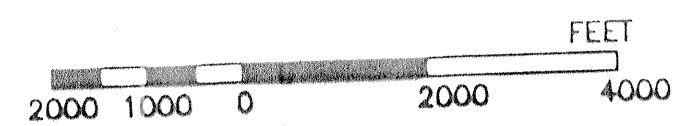
CHITINA AIRPORT  
 PROFILE & RPZ'S

SHEET  
 2 OF 3





VICINITY MAP  
 COPPER RIVER MERIDIAN  
 U.S.G.S. VALDEZ B-2 & C-2  
 SCALE 1"=1 Mile



FAR PART 77 PENETRATIONS

DESIGN \_\_\_\_\_  
 DRAWN \_\_\_\_\_  
 CHECKED \_\_\_\_\_

| BY | DATE | REVISIONS |
|----|------|-----------|
|    |      |           |
|    |      |           |
|    |      |           |
|    |      |           |

STATE OF ALASKA  
 DEPARTMENT OF TRANSPORTATION AND PUBLIC FACILITIES  
 NORTHERN REGION-DESIGN AND CONSTRUCTION-AVIATION  
 APPROVED *Daniel D. Urbach* DATE 9-10-97  
 DANIEL D. URBACH, P.E. AIRPORT DESIGN GROUP CHIEF

LAYOUT PLAN Conditionally Approved:  
 By *Matt Freeman* AAL-6129  
 AIRPORTS DIVISION, ALASKAN REGION  
 Date 9/18/97

CHITINA AIRPORT  
 AIRSPACE