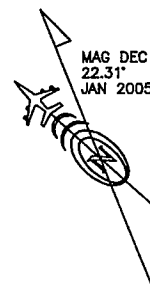
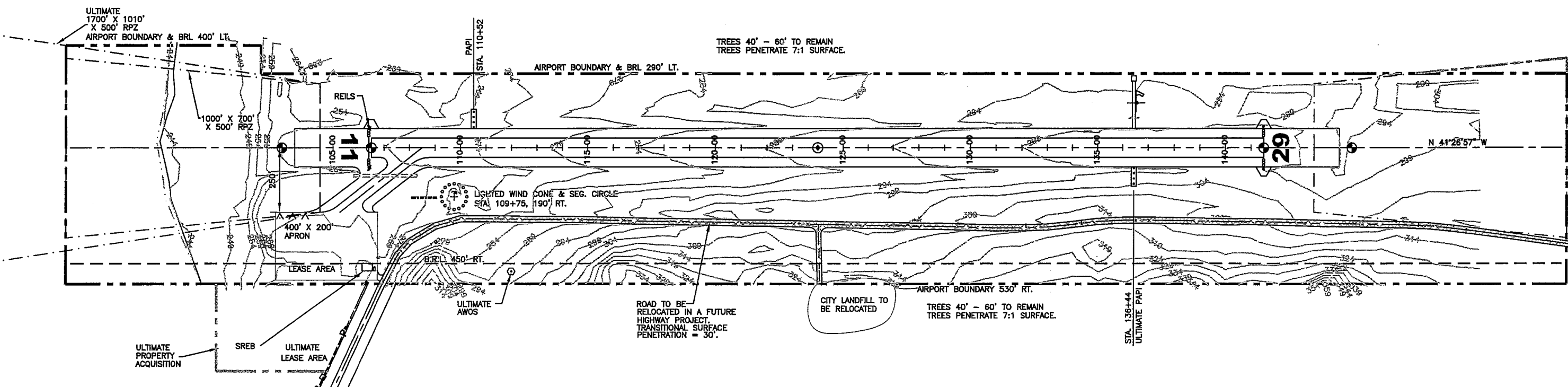


U:\avi\1ALP\RAMPART\Rampart1-ALP1

NO WIND DATA AVAILABLE



VICINITY MAP  
NO SCALE  
SEC. 24, T8N, R13W  
FAIRBANKS MERIDIAN, ALASKA  
USGS TANANA (C-1)



RUNWAY DATA		
	RUNWAY 11-29	
	EXISTING	ULTIMATE
% WIND COVERAGE	NO DATA	SAME
INSTRUMENT RUNWAY	NPI	NPI
RUNWAY SURFACE TYPE	GRAVEL	SAME
PAVEMENT STRENGTH	NONE	SAME
APPROACH SURFACES	34:1/20:1	34:1/20:1
APPROACH VISIBILITY MINIMUMS	1 MILE	3/4 MILE
RUNWAY LIGHTING	MIRL	SAME
RUNWAY MARKING	NONE	SAME
VISUAL APPROACH AIDS	PAPI/REILS R/W 11	PAPI, REILS
R/W DIMENSIONS	3500'x75'	SAME
R/W SAFETY AREA	4100'x150'	SAME
R/W OBJECT FREE AREA (ROFA)	4100'x500'	SAME
R/W OBSTACLE FREE ZONE (ROFZ)	400'x3900'	SAME
T/W WIDTH	50'	SAME
T/W SAFETY AREA WIDTH	120'	SAME
T/W OBJECT FREE AREA (TOFA)	182'	SAME

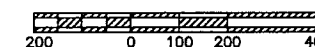
AIRPORT DATA		
	EXISTING	ULTIMATE
AIRPORT ELEVATION (MSL)	301'	SAME
AIRPORT REFERENCE CODE	B-II	SAME
MEAN DAILY MAX. TEMP. HOTTEST MONTH (JULY)	72°F	SAME
TAXIWAY LIGHTING	MIRL	SAME
RAMP LIGHTING	NONE	SAME
NAVIGATION AIDS	ROT. BEACON	ROT. BEACON, GPS
COMMUNICATION AIDS	NONE	SAME
AIRPORT REFERENCE POINT (ARP)	LAT. 85°30'28.44"N	SAME
STA. 124+00	LONG. 150°08'27.00"W	SAME
THRESHOLD R/W 11	LAT. 85°30'41.35"N	SAME
STA. 108+50	LONG. 150°08'54.47"W	SAME
THRESHOLD R/W 29	LAT. 85°30'15.53"N	SAME
STA. 141+50	LONG. 150°07'59.53"W	SAME

DATA BASE CONTROL YEAR: NAD 83

LEGEND		
	EXISTING	ULTIMATE
PROPERTY LINE	---	---
BUILDING RESTRICTION LINE (B.R.L.)	B.R.L.	SAME
DEVELOPMENT	[Symbol]	[Symbol]
WIND CONE & SEGMENTED CIRCLE	[Symbol]	SAME
WIND CONE ONLY	[Symbol]	SAME
BUILDINGS	[Symbol]	[Symbol]
ROADWAYS	[Symbol]	[Symbol]
AWOS	[Symbol]	[Symbol]
AIRPORT REFERENCE POINT	[Symbol]	[Symbol]
ROTATING BEACON	[Symbol]	[Symbol]
ANTENNAE/TOWERS	[Symbol]	[Symbol]
MONUMENTS	[Symbol]	[Symbol]
	[Symbol]	SHORELINE/WATERLINE
	[Symbol]	TREELINE
	[Symbol]	THRESHOLD
	[Symbol]	OVERHEAD POWER

NOTES  
NO OFZ PENETRATIONS.  
NO THRESHOLD SITING SURFACE OBJECT PENETRATIONS. R/W 11 ONLY.

NONSTANDARD CONDITIONS			
ITEM	STANDARD	EXISTING	ULTIMATE
LANDFILL SEPARATION FROM R/W C/L	5,000'	350'	13,700'
ROAD SEPARATION FROM R/W C/L	385'	250'	1000'



DESIGN CB/PS	
DRAWN CAT	10/12/05 AS-BUILT
	5/5/00 FAA APPROVED
CHECKED CML	5/25/99 AS-BUILT
BY DATE	REVISIONS

STATE OF ALASKA  
DEPARTMENT OF TRANSPORTATION AND PUBLIC FACILITIES  
NORTHERN REGION-DESIGN AND ENGINEERING SERVICES

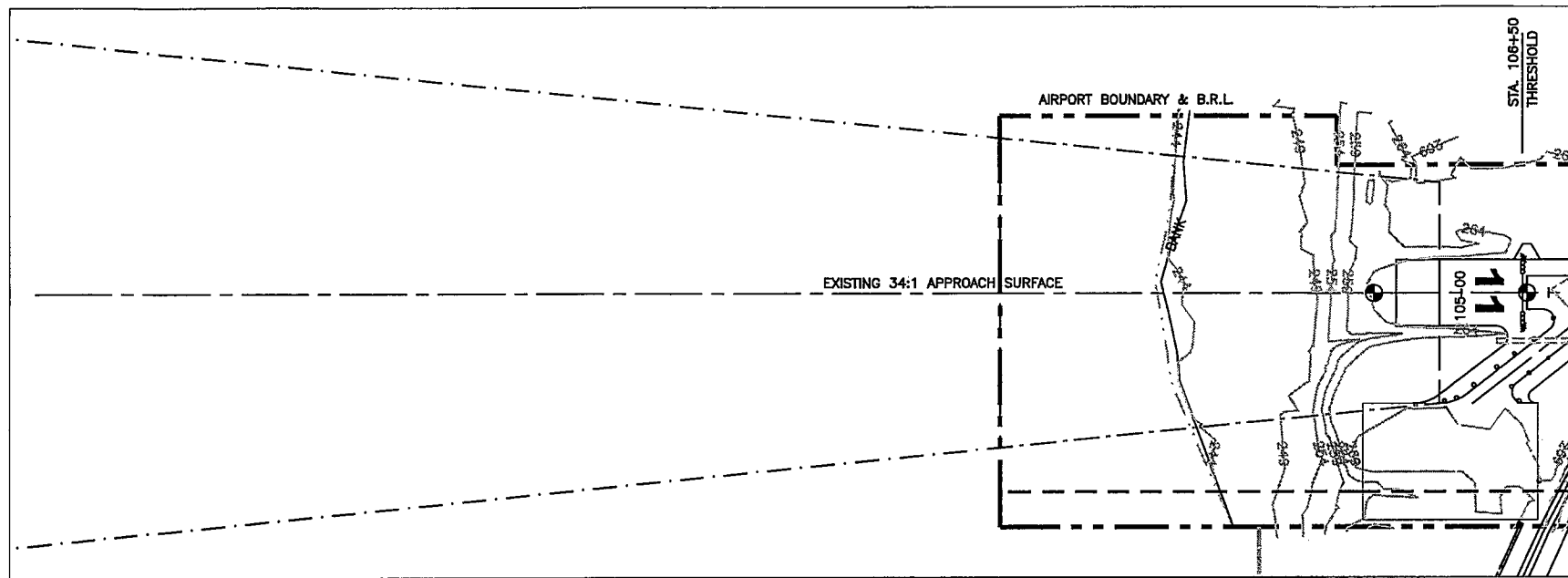
APPROVED  
*Patricia D. Miller* DATE 10/24/2005  
PATRICIA D. MILLER, P.E. DESIGN GROUP CHIEF

AIRPORT LAYOUT PLAN APPROVED  
BY LETTER DATED: 10/27/2005  
*John T. Lovett*  
AIRPORTS DIVISION,  
ALASKAN REGION, AAL-601  
AIRSPACE REVIEW #99AAL-114NRA

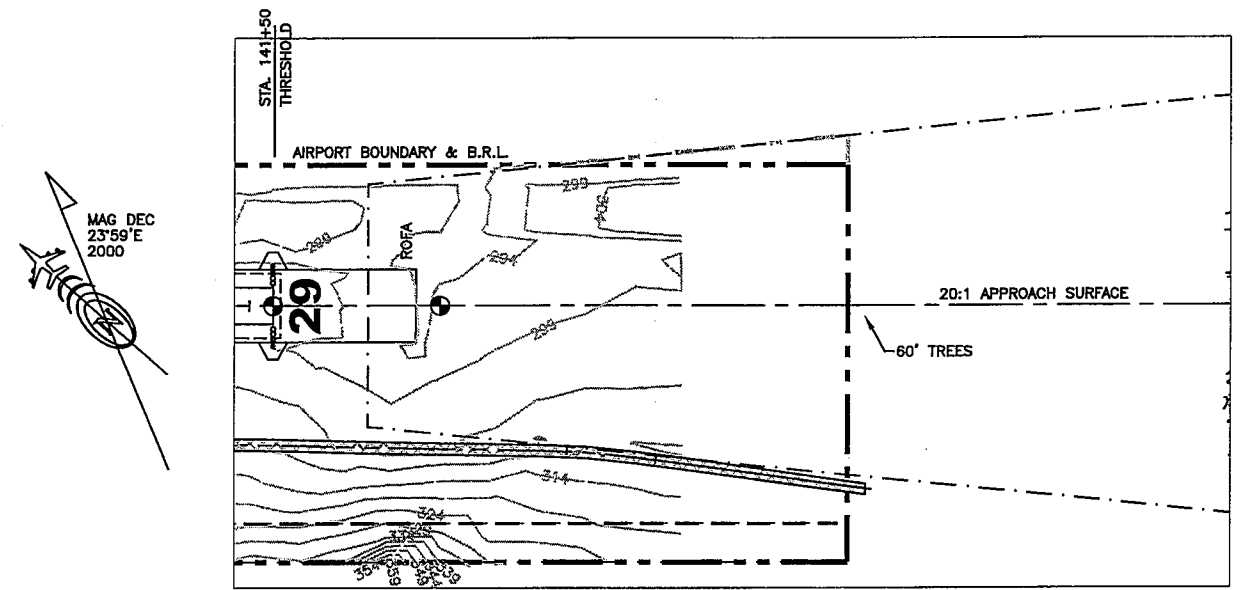
THIS ALP WAS PREPARED FROM AERIAL MAPPING DATED 8/96, FROM THE PREVIOUS ALP, FROM AS-BUILTS DATED 1989, 2004, AND SURVEY DATA DATED 11/19/96.  
THIS ALP SUPERSEDES ALP DATED 4-07-00 AND FAA APPROVED 5/05/00.

RAMPART AIRPORT  
AIRPORT LAYOUT PLAN

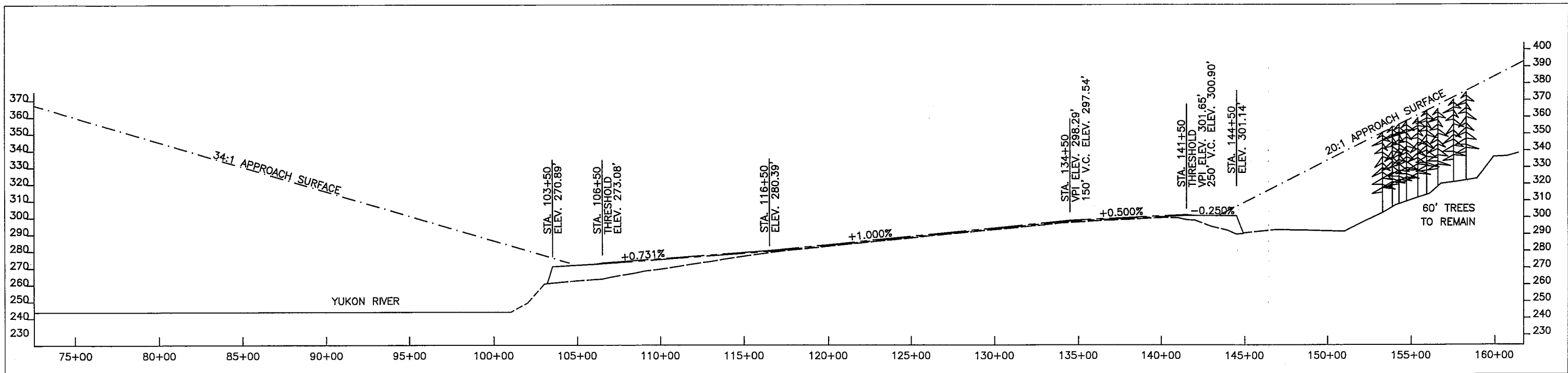
SHEET  
1 OF 4



R/W 11 INNER APPROACH



R/W 29 INNER APPROACH



R/W 11-29 PROFILE

DESIGN		
DRAWN		
CHECKED		
BY	DATE	REVISIONS
	10/12/05	AS-BUILT
	5/5/00	FAA APPROVED
	CAT 6/25/99	AS-BUILT

STATE OF ALASKA  
 DEPARTMENT OF TRANSPORTATION AND PUBLIC FACILITIES  
 NORTHERN REGION-DESIGN AND ENGINEERING SERVICES

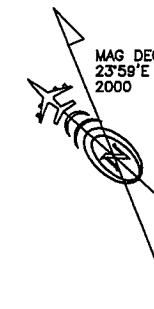
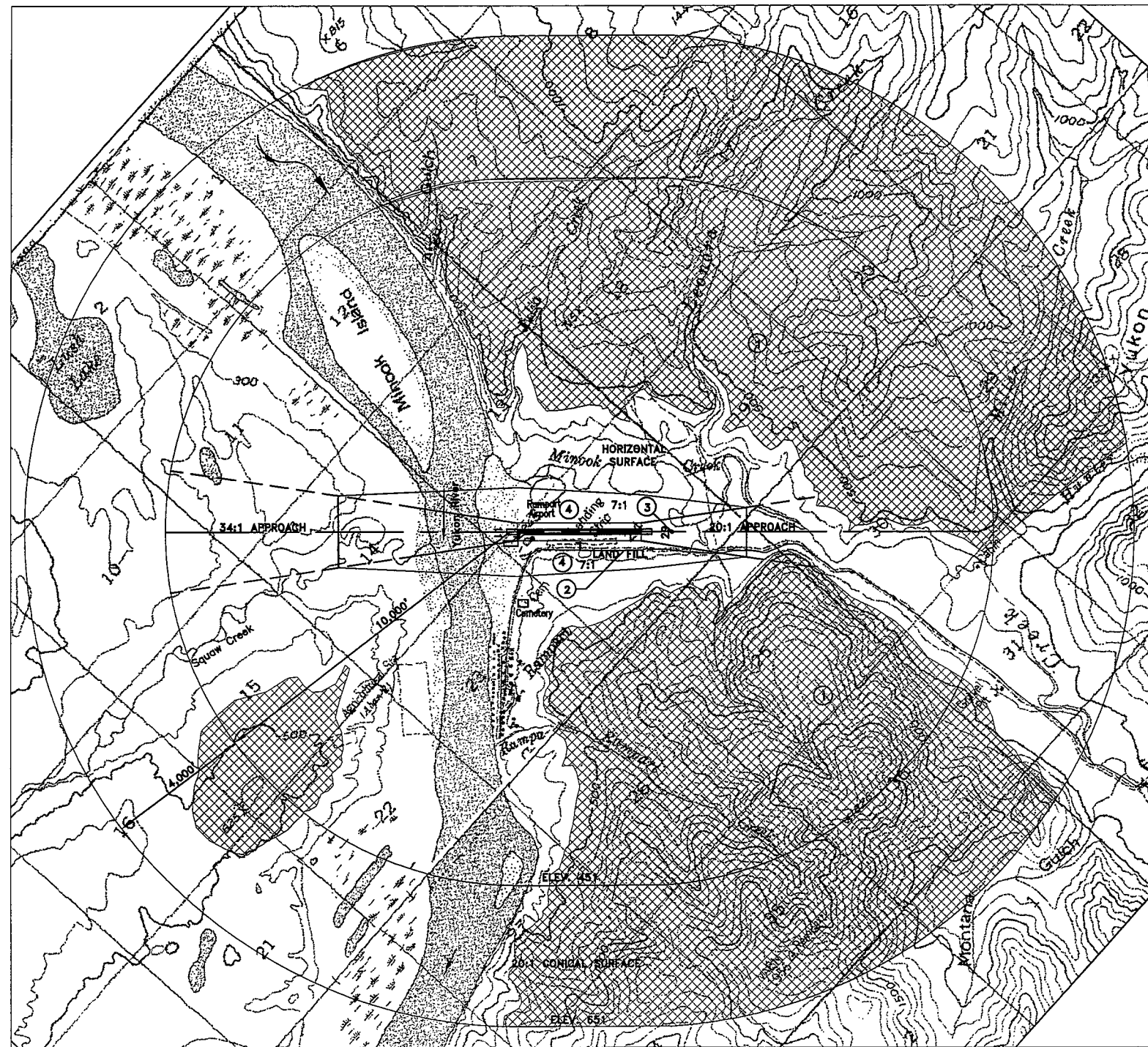
APPROVED  
*Patricia D. Miller*  
 PATRICIA D. MILLER, P.E.

DATE 10/24/2005  
 DESIGN GROUP CHIEF

AIRPORT LAYOUT PLAN APPROVED  
 BY LETTER DATED: 10/27/2005  
*John J. Lovett*  
 AIRPORTS DIVISION,  
 ALASKAN REGION, AAL-601  
 AIRSPACE REVIEW #99AAL-114-NRA

THIS ALP WAS PREPARED FROM AERIAL MAPPING DATED 8/96, FROM THE PREVIOUS ALP, FROM AS-BUILTS DATED 1989, 2004, AND SURVEY DATA DATED 11/19/98.  
 THIS ALP SUPERSEDES ALP DATED 4-07-00 AND FAA APPROVED 5/05/00.

RAMPART AIRPORT  
 INNER PORTION OF THE APPROACH  
 SURFACE PLANS & PROFILE



**NOTE:**  
REFER TO THE INNER PORTION OF THE  
APPROACH SURFACE PLAN VIEW DETAILS  
FOR CLOSE-IN OBSTRUCTIONS.



FAR PART 77 PENETRATIONS

OBSTRUCTION TABLE				
#	STRUCTURE NAME	TOP ELEV.	SURFACE PENETRATION	PROPOSED DISPOSITION OF OBSTRUCTION
1	HILLS	1500'	HORIZONTAL CONICAL APPR 29	NONE
2	ROAD	±300'	TRANSITIONAL	RELOCATE OFF PROPERTY
3	TREES	380'	APPR 29	TO REMAIN: OFF AIRPORT PROPERTY
4	40'-60' TREES	380'	TRANSITIONAL	TO REMAIN: OFF AIRPORT PROPERTY

DESIGN		
DRAWN		
CHECKED		
BY	DATE	REVISIONS
	10/12/05	AS-BUILT
	5/5/00	FAA APPROVED
CAT	6/25/99	AS-BUILT

STATE OF ALASKA  
DEPARTMENT OF TRANSPORTATION AND PUBLIC FACILITIES  
NORTHERN REGION-DESIGN AND ENGINEERING SERVICES

APPROVED  
*Patricia D. Miller*  
PATRICIA D. MILLER, P.E.

DATE 10/24/2005  
DESIGN GROUP CHIEF

AIRPORT LAYOUT PLAN APPROVED  
BY LETTER DATED: 10/27/2005  
*John T. Lovett*  
AIRPORTS DIVISION,  
ALASKAN REGION, AAL-601  
AIRSPACE REVIEW #99AAL-114NRA

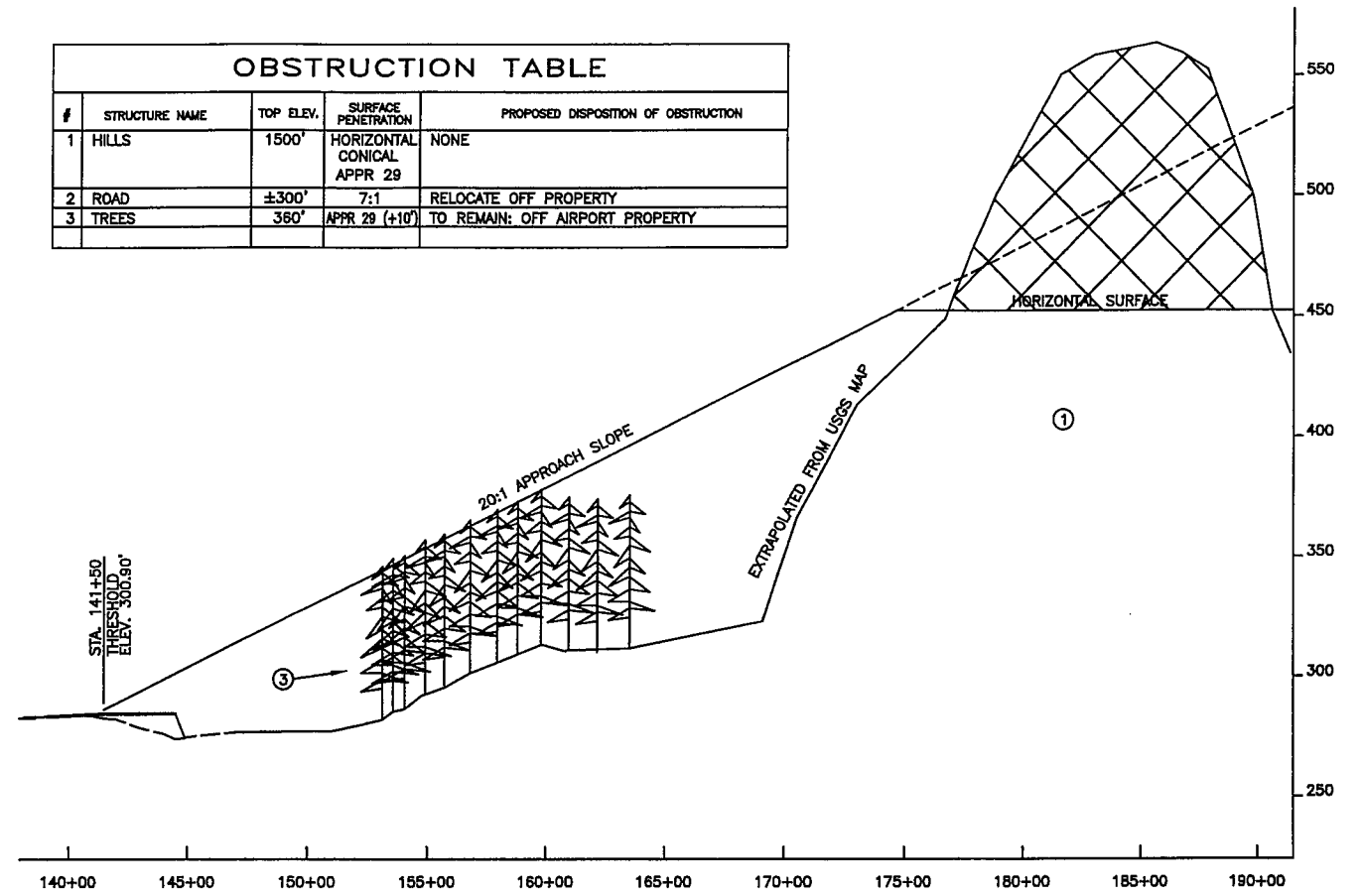
THIS ALP WAS PREPARED FROM AERIAL MAPPING DATED 8/96, FROM THE PREVIOUS ALP, FROM AS-BUILTS DATED 1989, 2004, AND SURVEY DATA DATED 11/19/96.  
THIS ALP SUPERSEDES ALP DATED 4-07-00 AND FAA APPROVED 5/05/00.

FEET  
2000 1000 0 2000 4000

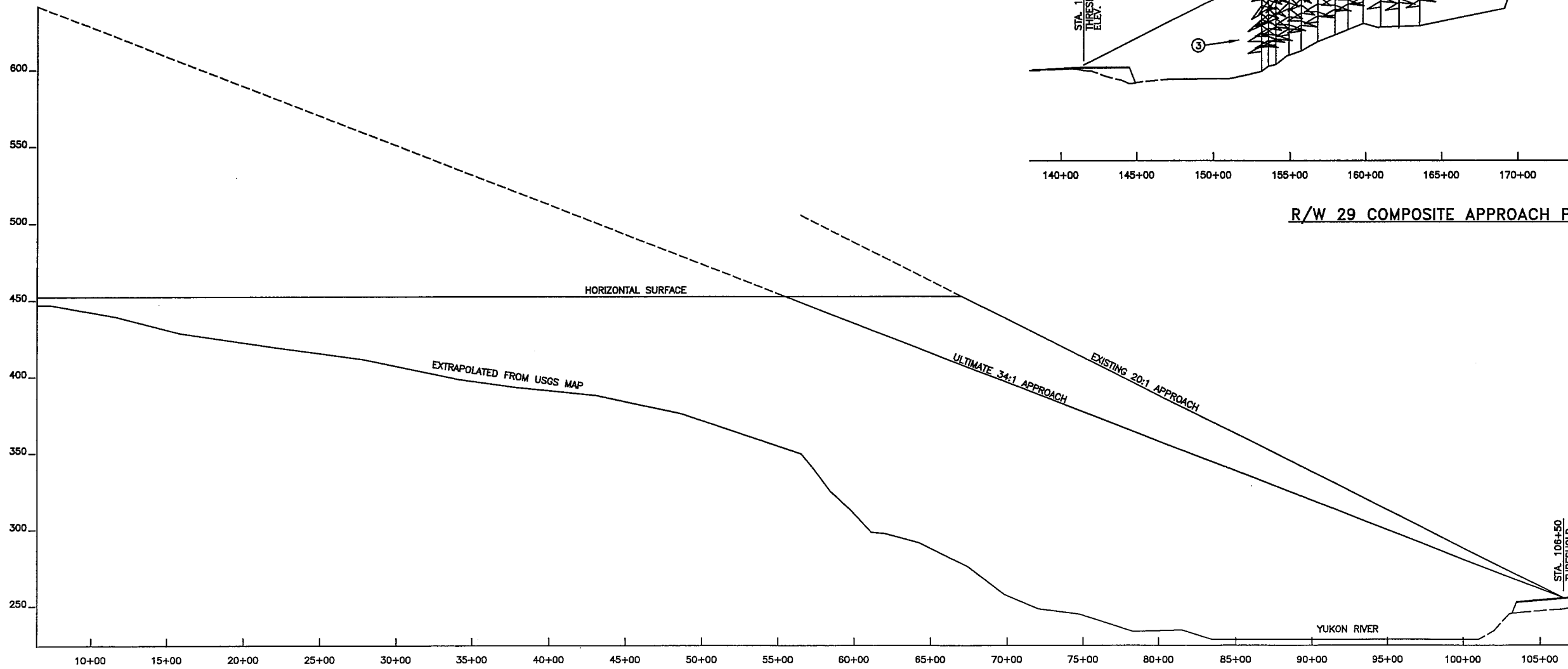
RAMPART AIRPORT  
AIRSPACE DRAWING

SHEET  
3 OF 4

OBSTRUCTION TABLE				
#	STRUCTURE NAME	TOP ELEV.	SURFACE PENETRATION	PROPOSED DISPOSITION OF OBSTRUCTION
1	HILLS	1500'	HORIZONTAL CONICAL APPR 29	NONE
2	ROAD	±300'	7:1	RELOCATE OFF PROPERTY
3	TREES	360'	APPR 29 (+10')	TO REMAIN; OFF AIRPORT PROPERTY



R/W 29 COMPOSITE APPROACH PROFILE



R/W 11 COMPOSITE APPROACH PROFILE

NOTE:  
REFER TO THE INNER PORTION OF THE  
APPROACH SURFACE PLAN VIEW DETAILS  
FOR CLOSE-IN OBSTRUCTIONS.

DESIGN		
DRAWN	10/12/05	AS-BUILT
CHECKED	5/5/00	FAA APPROVED
	CAT 6/25/99	AS-BUILT
BY	DATE	REVISIONS

STATE OF ALASKA  
DEPARTMENT OF TRANSPORTATION AND PUBLIC FACILITIES  
NORTHERN REGION-DESIGN AND ENGINEERING SERVICES

APPROVED  
*Patricia D. Miller*  
PATRICIA D. MILLER, P.E.

DATE 10/24/2005  
DESIGN GROUP CHIEF

AIRPORT LAYOUT PLAN APPROVED  
BY LETTER DATED: 10/27/2005  
*John T. Lovett*  
AIRPORTS DIVISION,  
ALASKAN REGION, AAL-601  
AIRSPACE REVIEW #99AAL-114NRA

THIS ALP WAS PREPARED FROM AERIAL MAPPING DATED 8/98, FROM THE PREVIOUS ALP, FROM AS-BUILTS DATED 1999, 2004, AND SURVEY DATA DATED 11/19/96.  
THIS ALP SUPERSEDES ALP DATED 4-07-00 AND FAA APPROVED 5/05/00.

RAMPART AIRPORT  
COMPOSITE APPROACH PROFILES