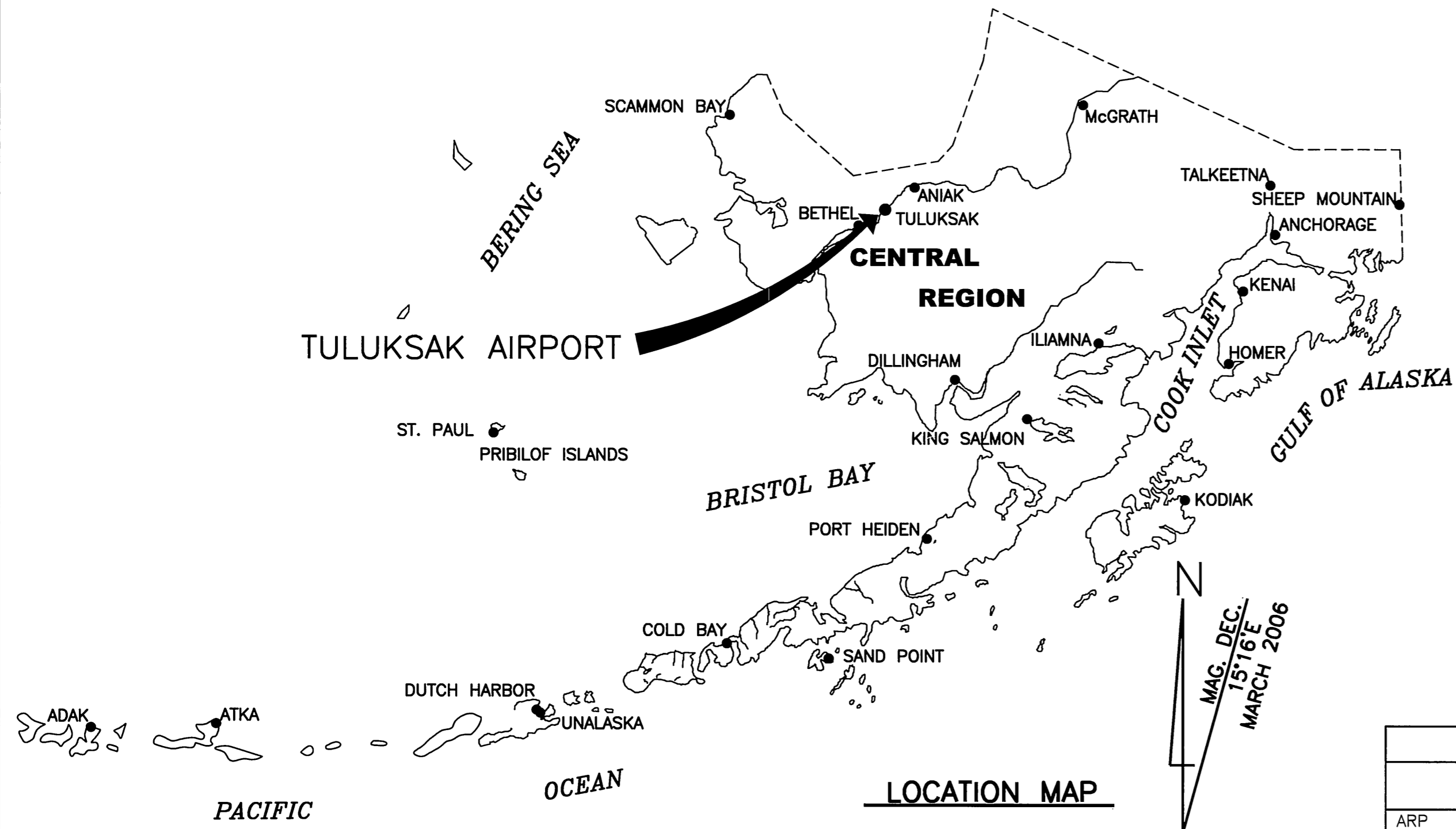


Date Plotted: 5/02/2007, 9:28 AM
 Layout Name: 1247.01 CIVIL Preliminary Engineering ACAD_Civil Acad 1247-01.dwg
 File Name:



LEGEND		
ITEM	EXISTING	ULTIMATE
AIRPORT REFERENCE POINT (A.R.P.)		
ANTENNA		
BLUFF		
BUILDINGS		
BUILDING RESTRICTION LINE		
FENCE		
PAPI		
PROPERTY LINE		
REIL		
ROADWAYS		
ROTATING BEACON		
SHORELINE		
SURVEY MONUMENT		
THRESHOLD MARKERS/LIGHTS		
TOPOGRAPHIC CONTOURS		
TREE (LARGE SINGLE)		
TREELINE		
VASI		
WIND CONE		
WIND CONE AND SEGMENTED CIRCLE		

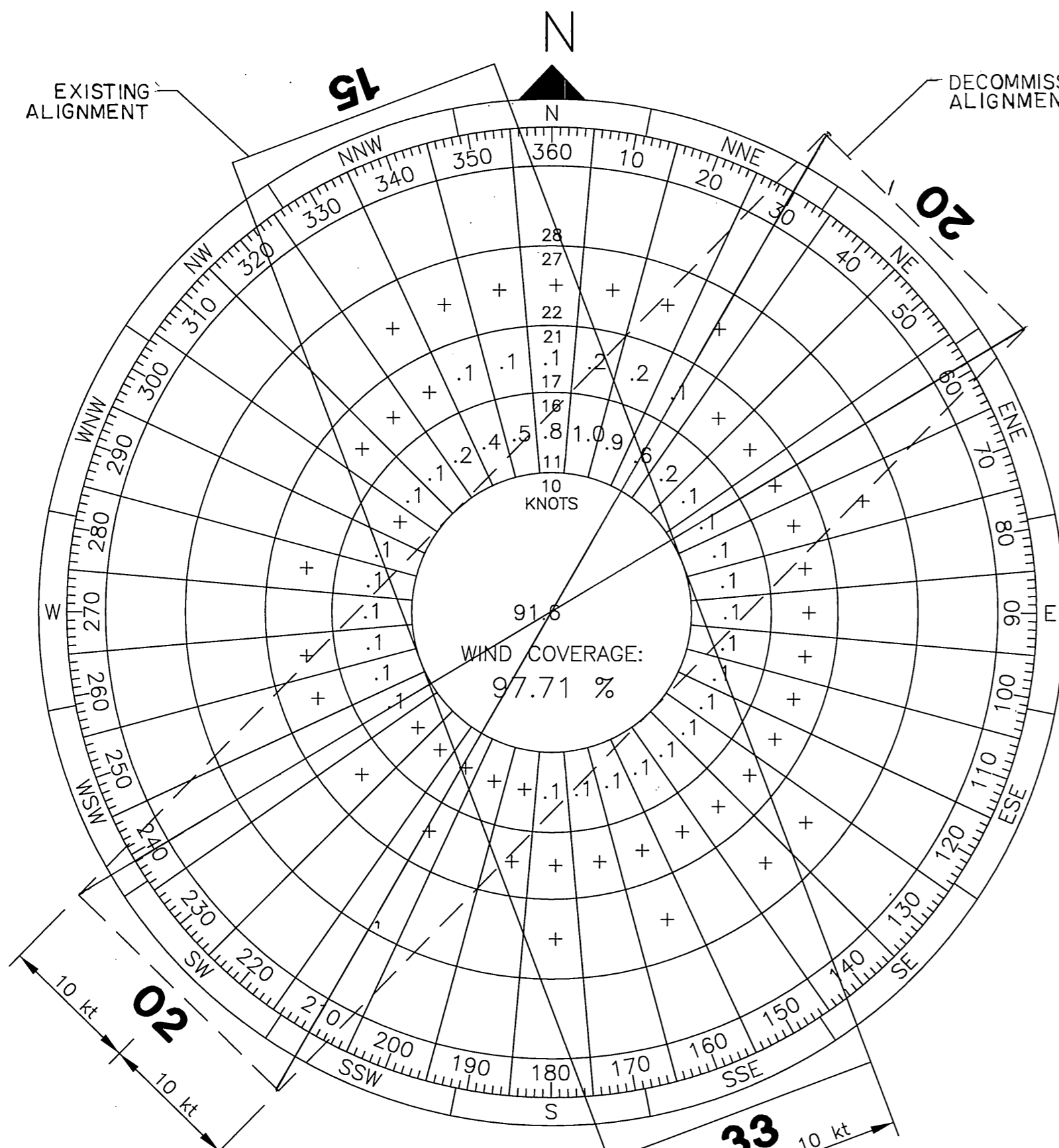
RUNWAY 02/20 DATA TABLE				
ITEM	EXISTING	NEAR-TERM	ULTIMATE	
RUNWAY TYPE	UTILITY OR OTHER THAN UTILITY	UTILITY	DECOMMISSIONED	
FAR PART 77 APPROACH CATEGORY (V, NPI, P)	V / V			
APPROACH SURFACES	20:1/20:1			
VISIBILITY MINIMUM	1 SM			
RUNWAY SURFACE	GRAVEL			
PAVEMENT STRENGTH SW,DW,DTW,DDTW x1000lbs	N/A			
AIRCRAFT APPROACH CATEGORY	B			
AIRPLANE DESIGN GROUP				
TRUE BEARING	N44°44'42"E			
EFFECTIVE GRADE	0.0 %			
TOUCHDOWN ELEVATION NAVD88, NGVD29	27.0' / 26.7'			
RUNWAY DIMENSIONS	30' X 2460'			
RUNWAY SAFETY AREA (RSA) DIMENSIONS	100' X 2770'			
LENGTH BEYOND R/W END	70' / 240'			
RUNWAY PROTECTION ZONE (RPZ) DIMENSIONS	250' X 1000' X 450'			
RUNWAY OBJECT FREE AREA (OFA) DIMENSIONS	400' X 2940'			
LENGTH BEYOND R/W END OR STOPWAY	240' / 240'			
RUNWAY OBSTACLE FREE ZONE (OFZ) DIMENSIONS	250' X 2900'			
RUNWAY LIGHTING	NONE			
RUNWAY MARKING TYPE	NONE			
RUNWAY VISUAL APPROACH AIDS	NONE			

GEOGRAPHIC COORDINATES TABLE				
ITEM	EXISTING* LATITUDE	EXISTING* LONGITUDE	EXISTING LATITUDE	EXISTING LONGITUDE
ARP	61°05'48.66"N	160°58'10.10"W	61°05'15.82"N	160°55'24.07"W
THRESHOLD RW 02	61°05'40.01"N	160°58'27.69"W		
THRESHOLD RW 20	61°05'57.23"N	160°57'52.46"W		
THRESHOLD RW 15			61°05'31.11"N	160°55'35.45"W
THRESHOLD RW 33			61°05'00.54"N	160°55'12.70"W

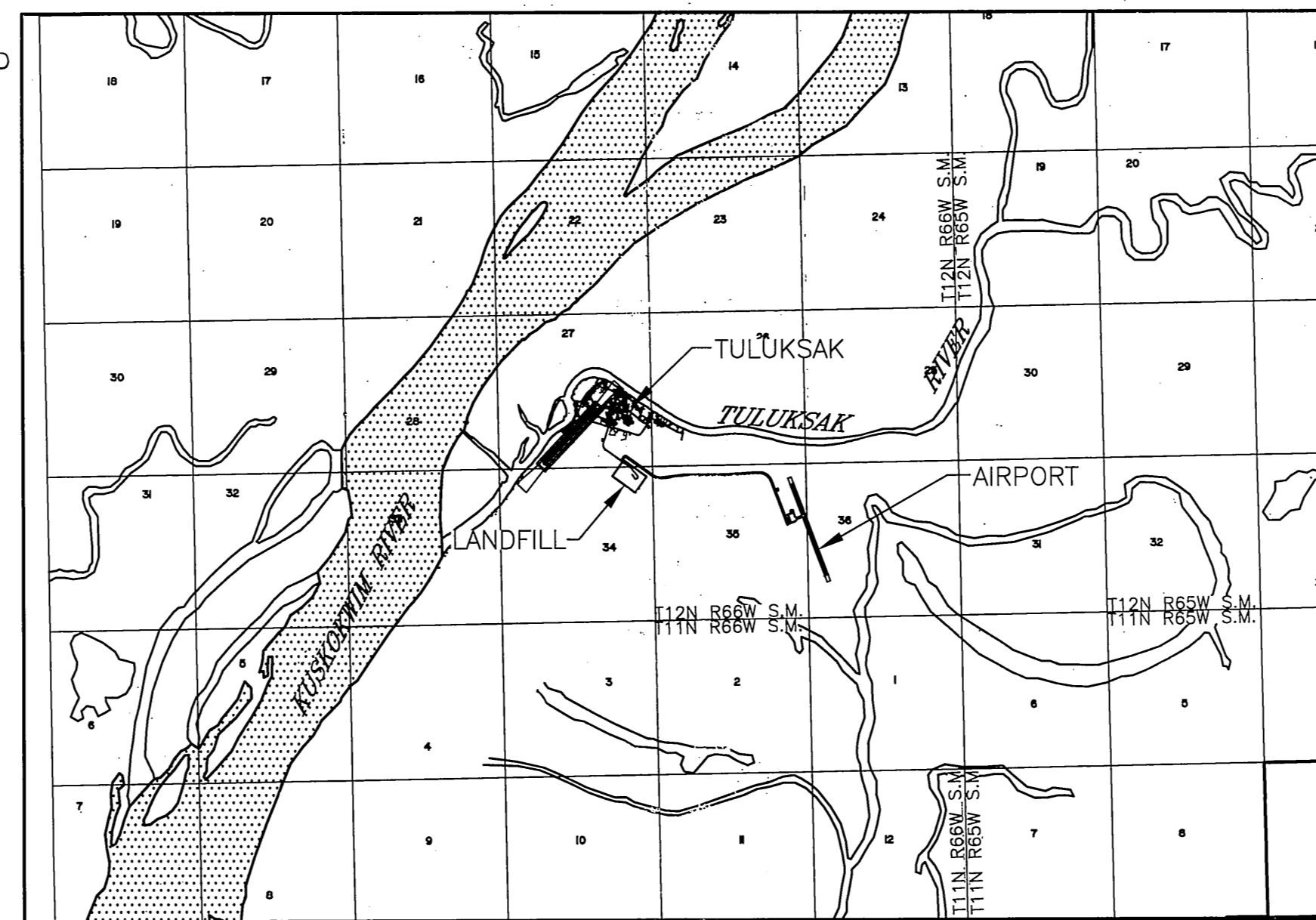
*VALUES OBTAINED FROM FAA FORM 5010

RUNWAY 15/33 DATA TABLE				
ITEM	EXISTING	NEAR-TERM	EXISTING	
RUNWAY TYPE	UTILITY OR OTHER THAN UTILITY		NOT APPLICABLE	
FAR PART 77 APPROACH CATEGORY (V, NPI, P)				
APPROACH SURFACES				
VISIBILITY MINIMUM				
RUNWAY SURFACE				
PAVEMENT STRENGTH SW,DW,DTW,DDTW x1000lbs				
AIRCRAFT APPROACH CATEGORY				
AIRPLANE DESIGN GROUP				
TRUE BEARING (NAD83)				
EFFECTIVE GRADE				
TOUCHDOWN ELEVATION NAVD88				
RUNWAY DIMENSIONS				
RUNWAY SAFETY AREA (RSA) DIMENSIONS				
LENGTH BEYOND R/W END				
RUNWAY PROTECTION ZONE (RPZ) DIMENSIONS				
RUNWAY OBJECT FREE AREA (OFA) DIMENSIONS				
LENGTH BEYOND R/W END OR STOPWAY				
RUNWAY OBSTACLE FREE ZONE (OFZ) DIMENSIONS				
RUNWAY LIGHTING				
RUNWAY MARKING TYPE				
RUNWAY VISUAL APPROACH AIDS				

* PAPI, REIL, BEACON
*ULTIMATE



WIND DATA TABLE				
RUNWAY	10.5 kt	13 kt	16 kt	20 kt
15/33	97.71%	-	-	-



VICINITY MAP
 1" = 5000'
 T12N, R66W SECTIONS 25-27, 34-36
 SEWARD MERIDIAN
 USGS RUSSIAN MISSION (A-6), ALASKA

MODIFICATION TO STANDARDS/ NON STANDARD CONDITIONS			
DESCRIPTION	STANDARD	EXISTING	ULTIMATE
RUNWAY SAFETY AREA WIDTH	120'	100'	120'
RUNWAY SAFETY AREA BEYOND THRESHOLD	240'	90'/240'	240'
TRAVERSE WAY IN RSA (END OF RUNWAY 20)	NONE	YES	NONE
BRUSH WITHIN OFA AND OFZ LIMITS	NONE	YES	NONE
TRAILS WITHIN OFA AND OFZ LIMITS	NONE	YES	NONE
DWELLINGS IN RPZ	NONE	8 DWELLINGS	NONE

AIRPORT DATA TABLE		
ITEM	EXISTING	EXISTING
ICAO IDENTIFIER	NONE	NONE
NATIONAL AIRPORT IDENTIFIER	TLT	
FAA SITE NUMBER	50771.*A	50771.*A
AIRPORT ELEVATION NAVD88	28.9'	32.3'
AIRPORT REFERENCE CODE	B	B I
MEAN MAX. TEMPERATURE, HOTTEST MONTH	63 F JULY	63 F JULY
AIRPORT AND TERMINAL NAVIGATION AIDS	NONE	GPS,*PAPI, REILS
TAXIWAY LIGHTING/MARKING	NONE / NONE	MITL / NONE
OBSTRUCTION SURVEY SOURCE & TYPE	AERIAL MAPPING, USGS QUAD	ANP
MAGNETIC DECLINATION, YEAR, RATE OF CHANGE	15°16'E, MARCH 2006	0°12' (W)/YEAR

*ULTIMATE

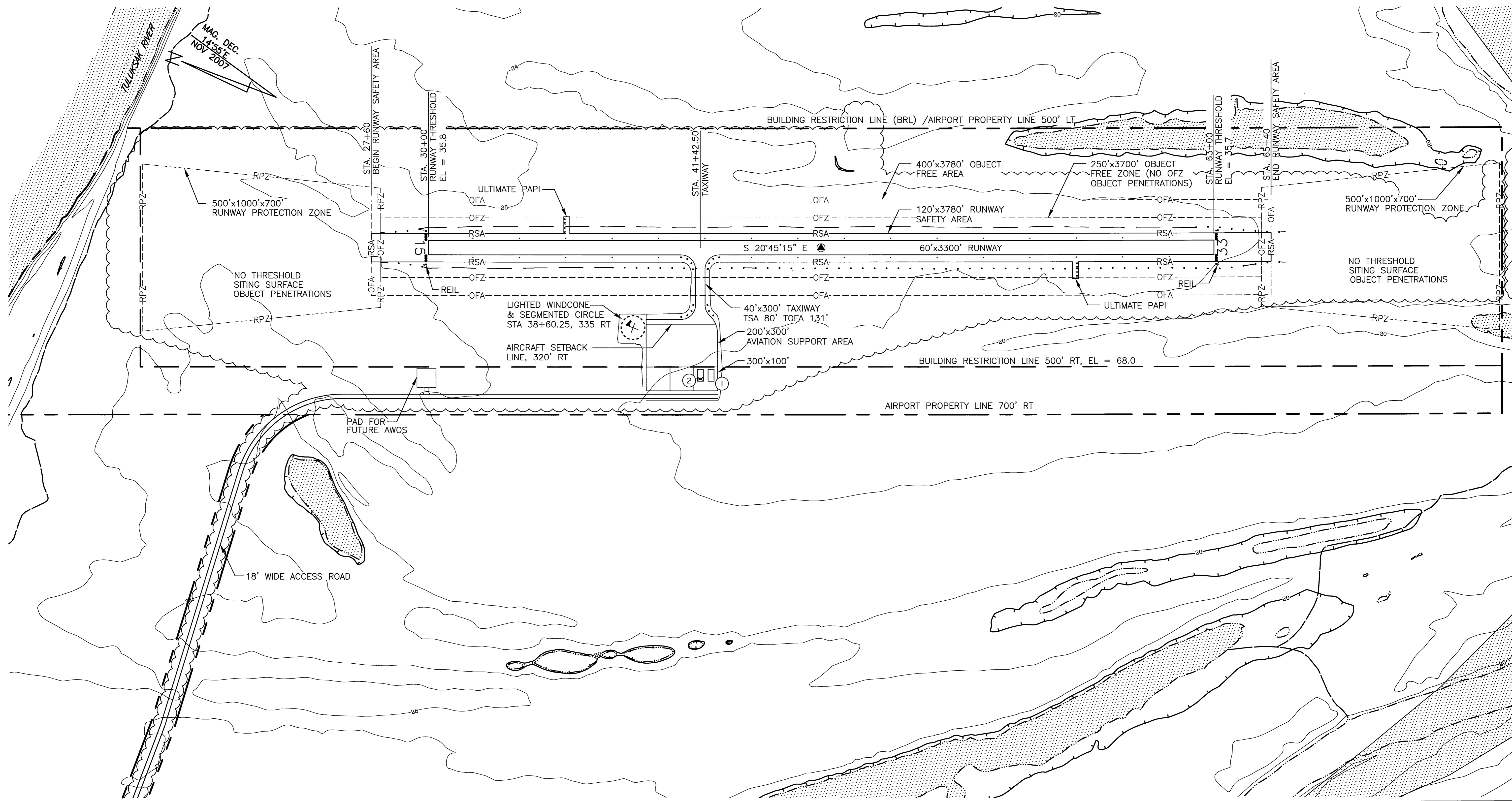
DRAWING INDEX	
SHT #	TITLE
1	WIND ROSE, DATA TABLES, LOCATION MAP & VICINITY MAP
2	EXISTING PLAN
3-2	ULTIMATE PLAN AIRPORT LAYOUT PLAN
4-3	INNER PORTION OF APPROACH SURFACE
5-4	F.A.R. PART 77 SURFACES
6-5	PROPERTY MAP

APPROVED: <i>[Signature]</i> DATE: 5-15-2007 ROBERT A. CAMPBELL, P.E. PRECONSTRUCTION ENGINEER RECOMMENDED: <i>[Signature]</i> DATE: 5/7/2007 HARVEY M. DOUTHIT, P.E. DESIGN SECTION CHIEF	STATE OF ALASKA DEPARTMENT OF TRANSPORTATION AND PUBLIC FACILITIES CENTRAL REGION
AIRPORT LAYOUT PLAN CONDITIONAL APPROVAL SUBJECT TO ALP APPROVAL LETTER DATED 1/20/07 FAA AIRSPACE REVIEW NUMBER: 2006-AAL-244-NRA DATE: 1-20-07 FAA, AIRPORTS DIVISION ALASKAN REGION, AAL-621	TULUKSAK AIRPORT TULUKSAK, ALASKA AIRPORT LAYOUT PLAN WIND ROSE, DATA TABLES, LOCATION MAP & VICINITY MAP

DATE: 4/24/07
SHEET: 1 OF 5

SOURCE: ENVIRONMENTAL AND NATURAL RESOURCES INSTITUTE (ENRI)
 PERIOD: SEPTEMBER 1995 - FEBRUARY 1997

Date Plotted: 6/09/2014, 1:59 PM
 Layout Name: PPO1
 File Name: W:\Projects\Tuluksak\ALP\ALP_2014_Update\Final Drawings\1247-arp02.dwg
 Designed By: rkrvant
 Drawn By: rkrvant
 Checked By:



BUILDING DATA TABLE				
ID #	DESCRIPTION	STATION/OFFSET	TOP ELEV (NAVD 88)	OBSTRUCT. MARKING
1	SRE BUILDING	41+65/500 RT	61.9	NONE
2	ROTATING BEACON(ON SREB)	41+42.7/555.4 RT	65.6	NONE



BY	DATE	REVISION
NK	04-29-08	REVISED ACCESS ROAD & PROPERTY BOUNDARY
	06/2014	AIRPORT RELOCATION

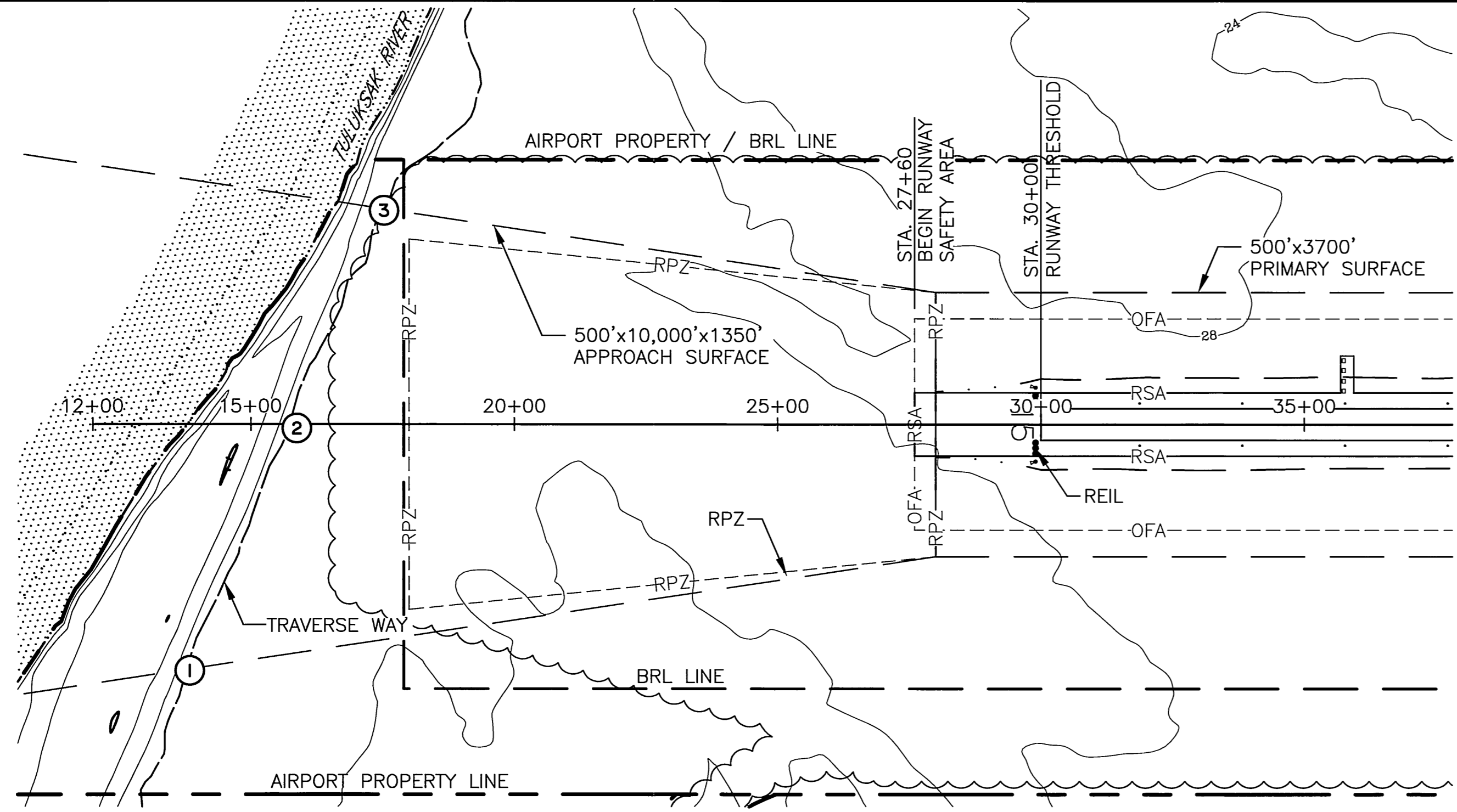
STATE OF ALASKA
DEPARTMENT OF TRANSPORTATION
AND PUBLIC FACILITIES
CENTRAL REGION

TULUKSAK AIRPORT
 TULUKSAK, ALASKA
 AIRPORT LAYOUT PLAN

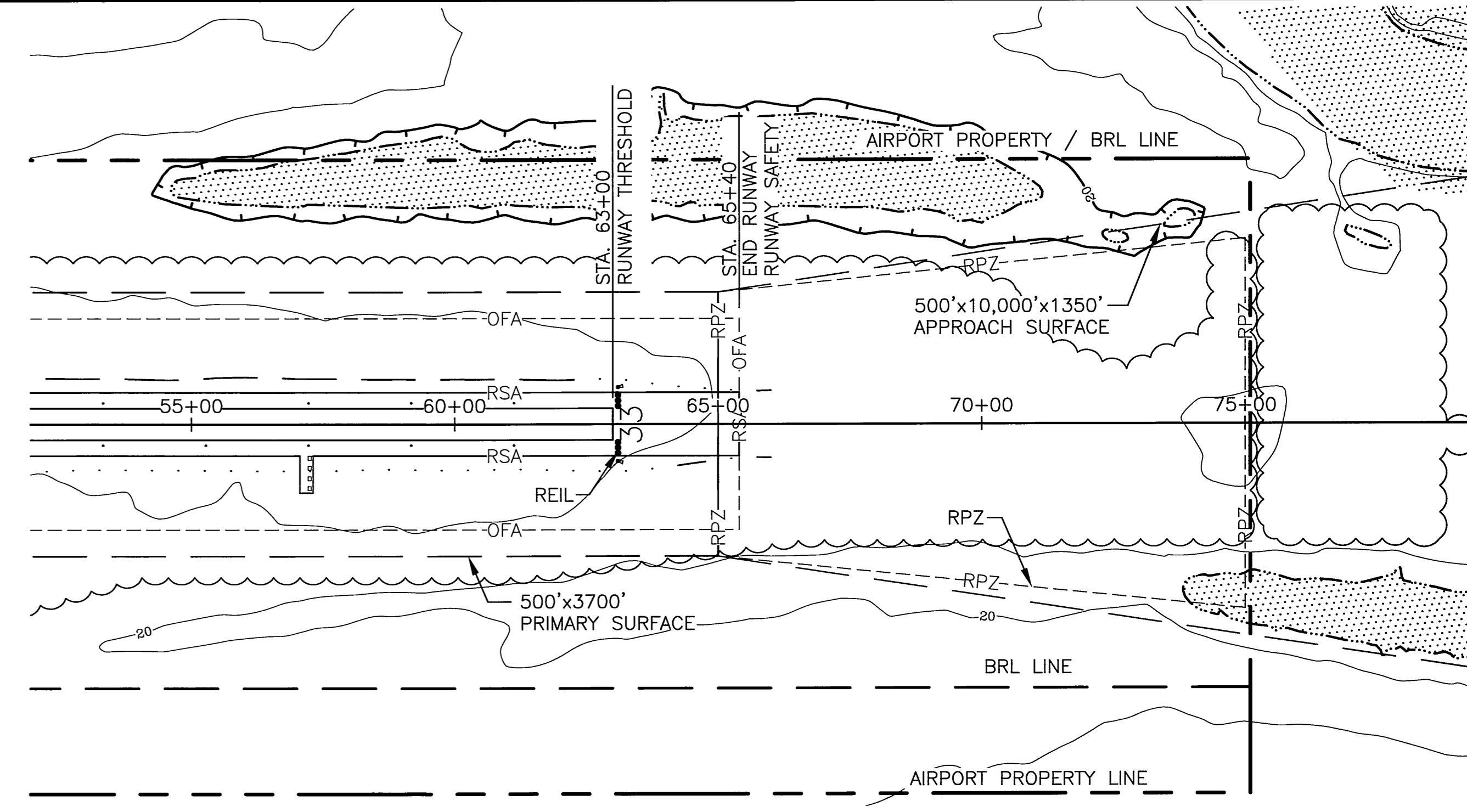
AIRPORT LAYOUT PLAN

DATE:	11/30/07
SHEET:	2
	OF 5

Date Plotted: 6/09/2014, 2:01 PM
 Layout Name: Layout1
 File Name: W:\Projects\Tuluksak\ALP_2014_Update\Final Drawings\51247-01p03.dwg
 Designed By: rkbryant
 Drawn By: rkbryant
 Checked By:

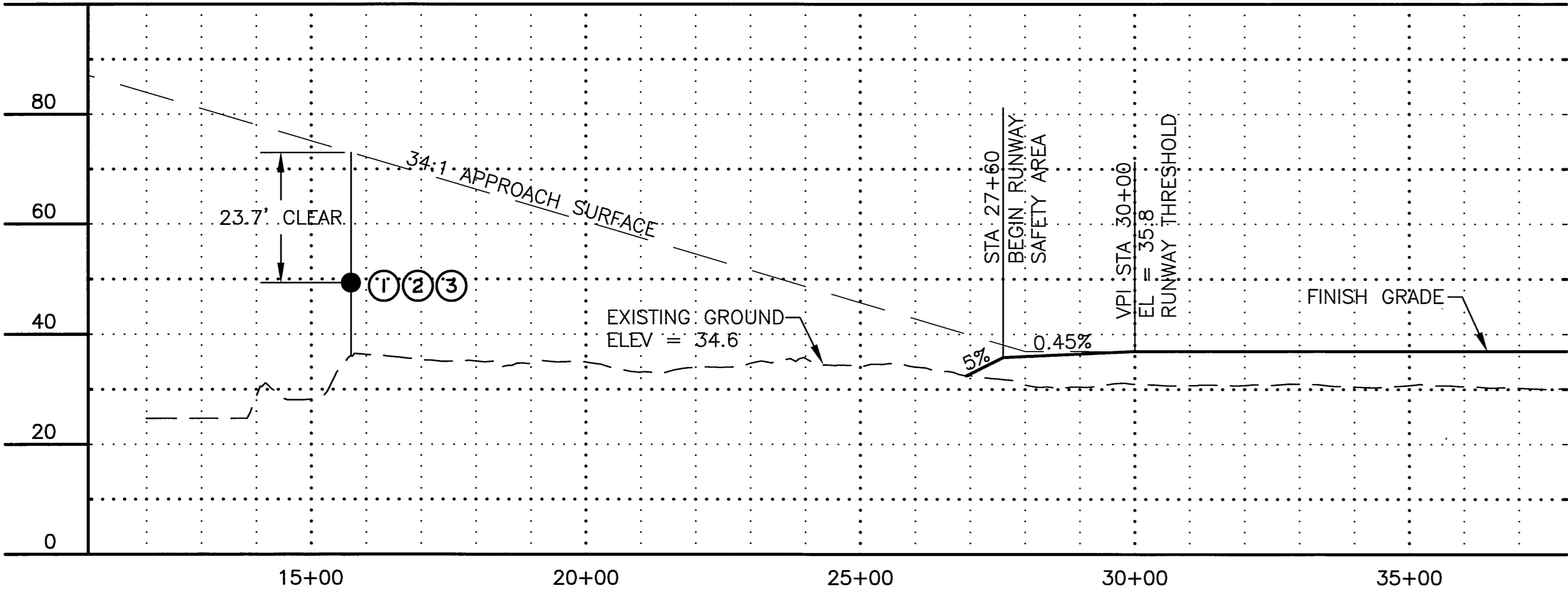
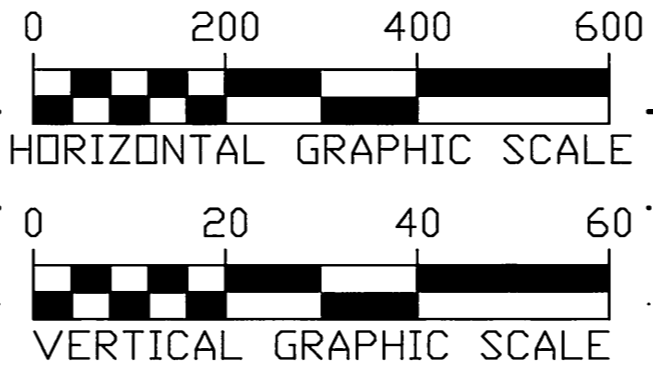


RUNWAY 15

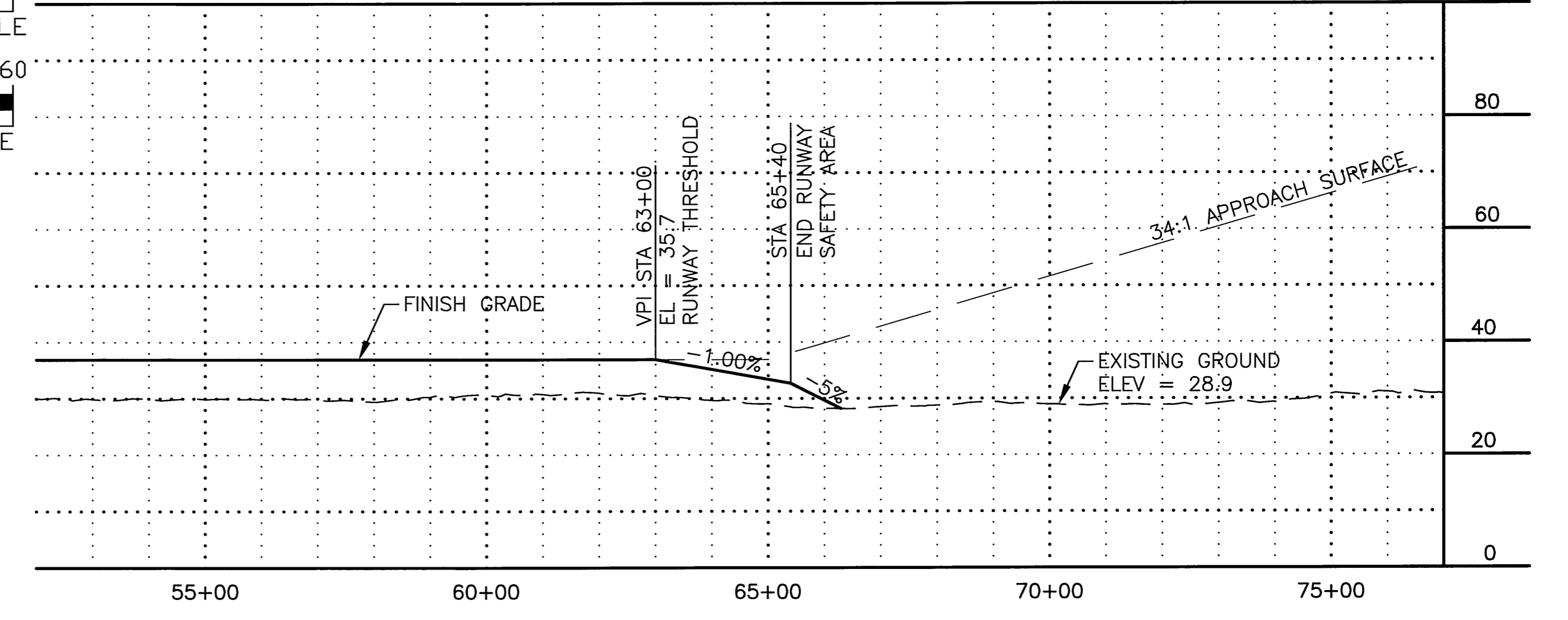


RUNWAY 33

MAG. DEC. 14°55'E
NOV 2007



RUNWAY 15



RUNWAY 33

ID (#)	DESCRIPTION	STATION/OFFSET	ELEVATION	SURFACE PENETRATED	SURFACE ELEVATION	AMOUNT PENETRATION	DISPOSITION	STAGE TO CORRECT
	NONE							

ID (#)	DESCRIPTION	STATION/OFFSET	ELEVATION	SURFACE PENETRATED	SURFACE ELEVATION	AMOUNT PENETRATION	DISPOSITION	STAGE TO CORRECT
	NONE							

NOTES

- NO THRESHOLD SITING SURFACE OBJECT PENETRATIONS.
- THRESHOLD SITING SURFACE IS CLEAR FOR INSTRUMENT STRAIGHT-IN NIGHT OPERATIONS.
- OBSTACLE CLEARANCE SURFACE EXTENDS 10,000' AT 50:1 OR FLATTER.

NOTES

- NO THRESHOLD SITING SURFACE OBJECT PENETRATIONS.
- THRESHOLD SITING SURFACE IS CLEAR FOR INSTRUMENT STRAIGHT-IN NIGHT OPERATIONS.
- OBSTACLE CLEARANCE SURFACE EXTENDS 10,000' AT 50:1 OR FLATTER.

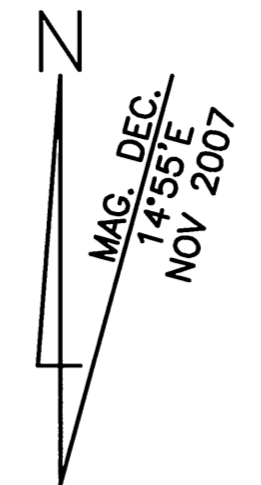
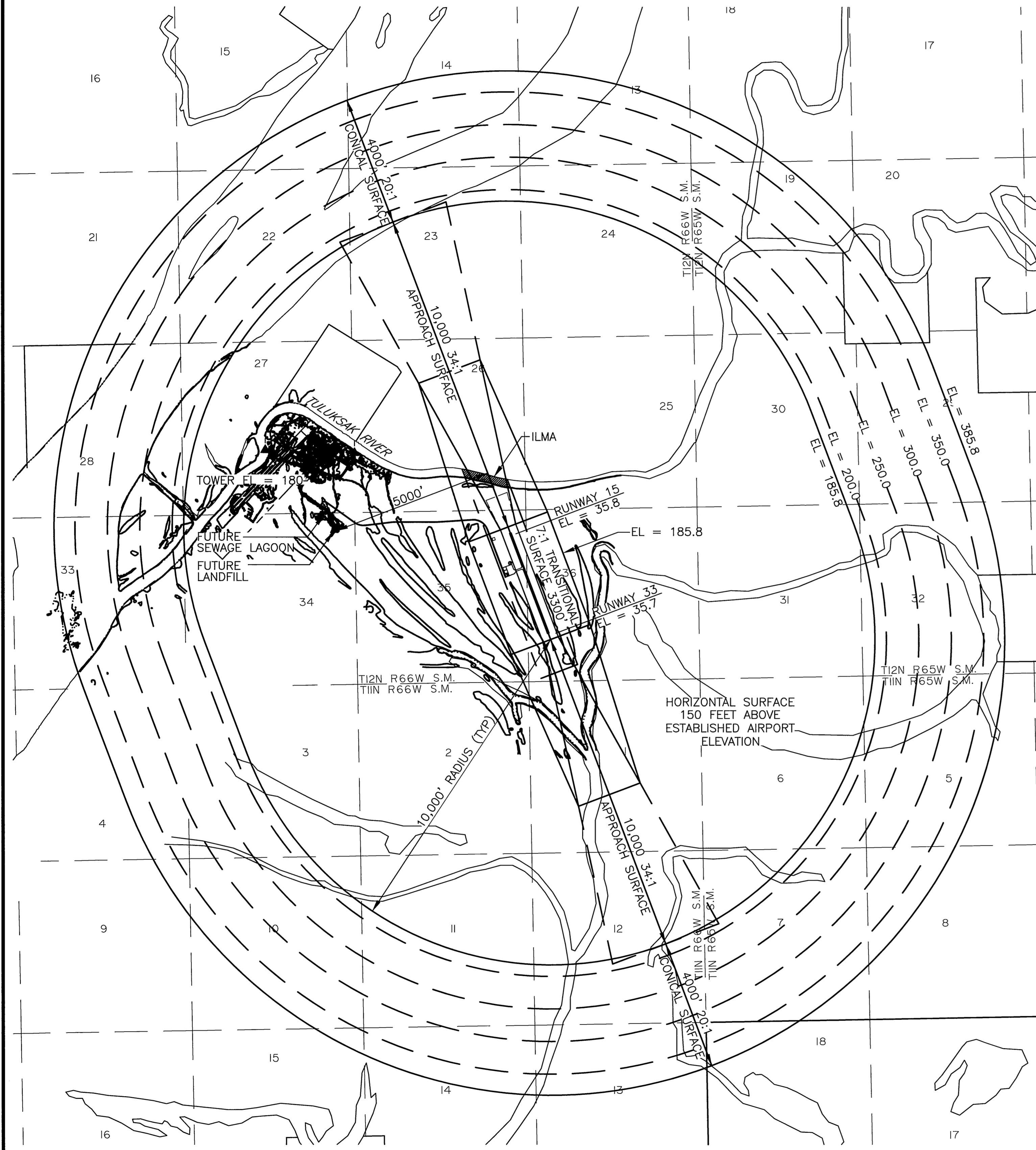
STATE OF ALASKA
DEPARTMENT OF TRANSPORTATION
AND PUBLIC FACILITIES
CENTRAL REGION

BY	DATE	REVISION

TULUKSAK AIRPORT
 TULUKSAK, ALASKA
 AIRPORT LAYOUT PLAN
 INNER PORTION OF APPROACH SURFACE

DATE: 11/30/07
 SHEET: 3 OF 5

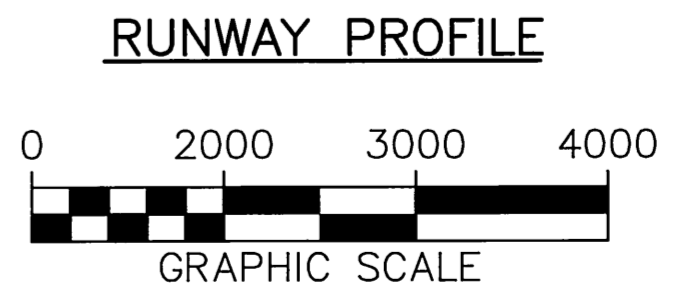
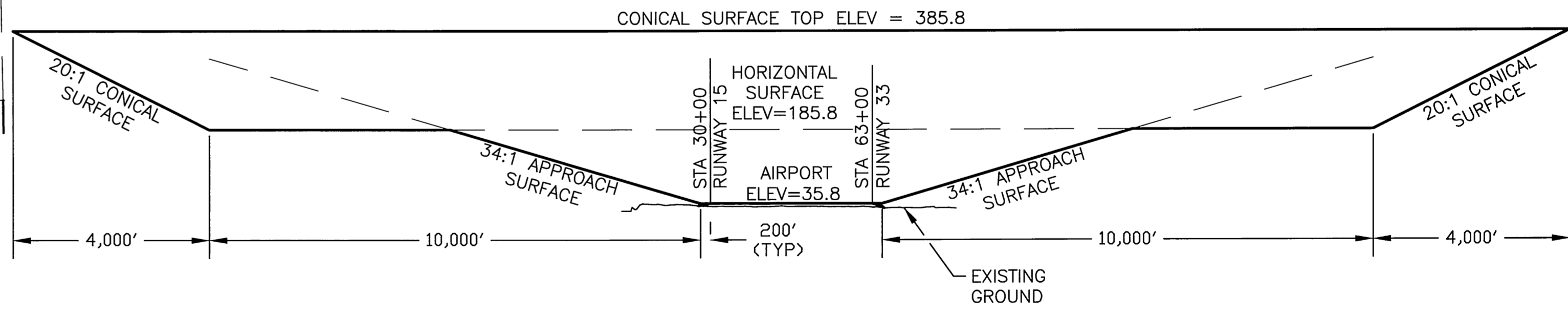
Date Plotted: 6/09/2014, 3:20 PM
 Layout Name: W:\Projects\Tuluksak\ALP\ALP_2014_Update\Final Drawings\51247-clip04.dwg
 File Name:
 Designed By: rkbryant
 Drawn By:
 Checked By:



NOTES:

1. ALL ELEVATIONS AND CONTOURS ARE BASED ON NAVD88.
2. ESTABLISHED AIRPORT ELEVATION IS 35.8 FEET.
3. NO OBSTRUCTIONS, INCLUDING GROUND PENETRATIONS, ARE REPORTED WITHIN F.A.R. PART 77 IMAGINARY SURFACES.
4. TULUKSAK AIRPORT IS PLANNED FOR NPI APPROACHES WITH VISIBILITY MINIMUMS NOT LESS THAN 1 MILE. AIRPORT REFERENCE CODE B-I UTILITY RUNWAY.
5. BASE MAP DATA FROM USGS QUAD, RUSSIAN MISSION (A-6).
6. REFER TO THE INNER PORTION OF THE APPROACH SURFACE DRAWINGS FOR INNER PORTION OBSTRUCTION TABLE.
7. PRIMARY SURFACE WIDTH IS 500'.
8. THERE ARE NO KNOWN HEIGHT RESTRICTIONS.

ID #	DESCRIPTION	STATION/OFFSET	ELEVATION	SURFACE PENETRATED	SURFACE ELEVATION	AMOUNT PENETRATION	DISPOSITION	STAGE TO CORRECT
NONE	-	-	-	-	-	-	-	-



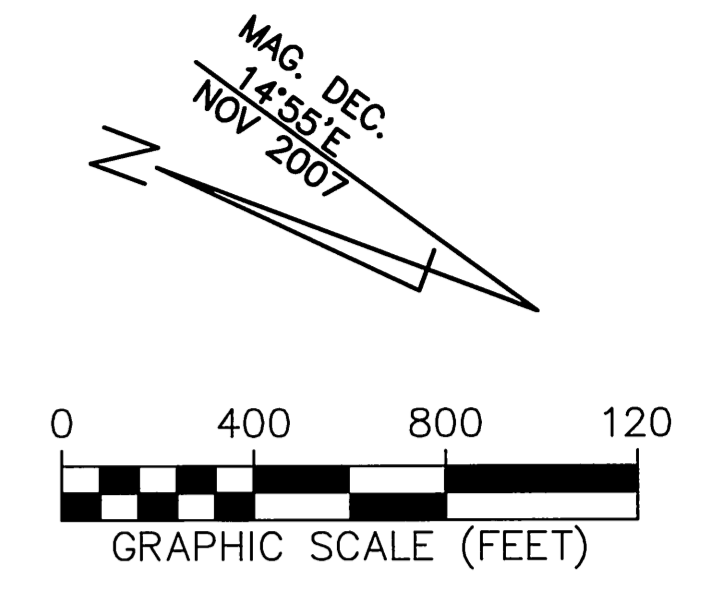
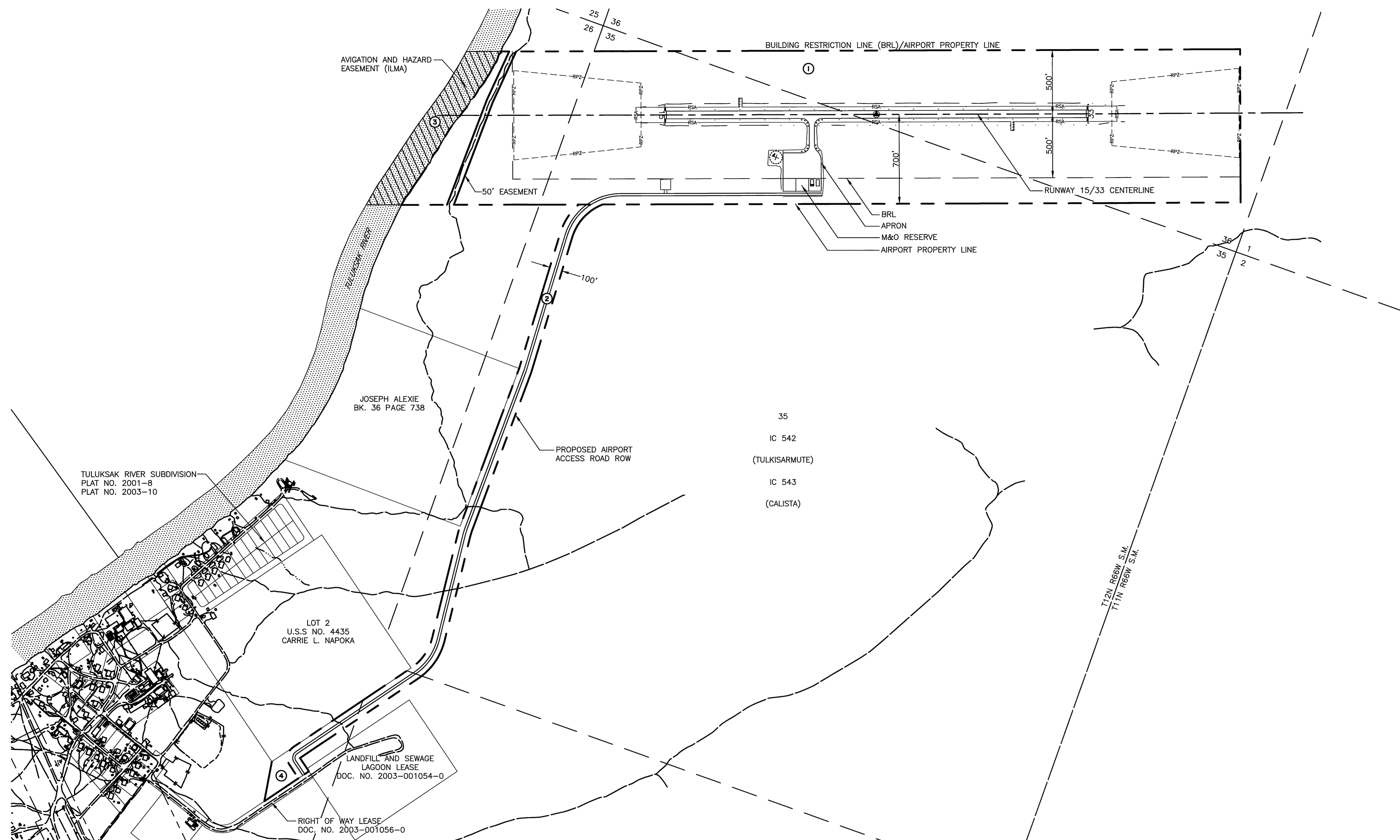
STATE OF ALASKA
DEPARTMENT OF TRANSPORTATION
AND PUBLIC FACILITIES
CENTRAL REGION

BY	DATE	REVISION

TULUKSAK AIRPORT
 TULUKSAK, ALASKA
 AIRPORT LAYOUT PLAN
 F.A.R. PART 77 SURFACE

DATE: 11/30/07
 SHEET: 4 OF 5

Date Plotted: 6/09/2014, 2:06 PM
 Layout Name: W:\Projects\Tuluksak\ALP\ALP 2014 Update\Final Drawings\51247-01p05.dwg
 File Name:
 Designed By: rbrvant
 Drawn By:
 Checked By:



PROPERTY STATUS

ID #	INTEREST ACQUIRED	GRANTOR	GRANTEE	PARCEL SIZE	DATE ACQUIRED	RECORDED DOCUMENT NO.	ACQUIRED A.I.P. NO.
1	FEE SURFACE FEE SUBSURFACE	TULKISARMUTE, INC. CALISTA, CORPORATION	STATE OF ALASKA, DOT&PF	166.37 Ac.	2/4/2009	2009-000165-0 2009-000164-0	3-02-0484-001-2009
2	FEE SURFACE FEE SUBSURFACE	TULKISARMUTE, INC. CALISTA, CORPORATION	STATE OF ALASKA, DOT&PF	12.28 Ac.	2/4/2009	2009-000165-0 2009-000164-0	3-02-0484-001-2009
3	ILMA FOR AVIGATION AND HAZARD EASEMENT	STATE OF ALASKA, DNR	STATE OF ALASKA, DOT&PF	8.47 Ac.	—	ADL 231276	3-02-0484-001-2009
4	FEE SURFACE FEE SUBSURFACE	TULKISARMUTE, INC. CALISTA, CORPORATION	STATE OF ALASKA, DOT&PF	1.29 Ac.	2/4/2009	2009-000806-0 2009-000805-0	3-02-0484-001-2009

STATE OF ALASKA
DEPARTMENT OF TRANSPORTATION
AND PUBLIC FACILITIES
CENTRAL REGION

TULUKSAK AIRPORT
 TULUKSAK, ALASKA
 AIRPORT LAYOUT PLAN
 PROPERTY MAP

DATE: 11/30/07
 SHEET: 5 OF 5

BY	DATE	REVISION