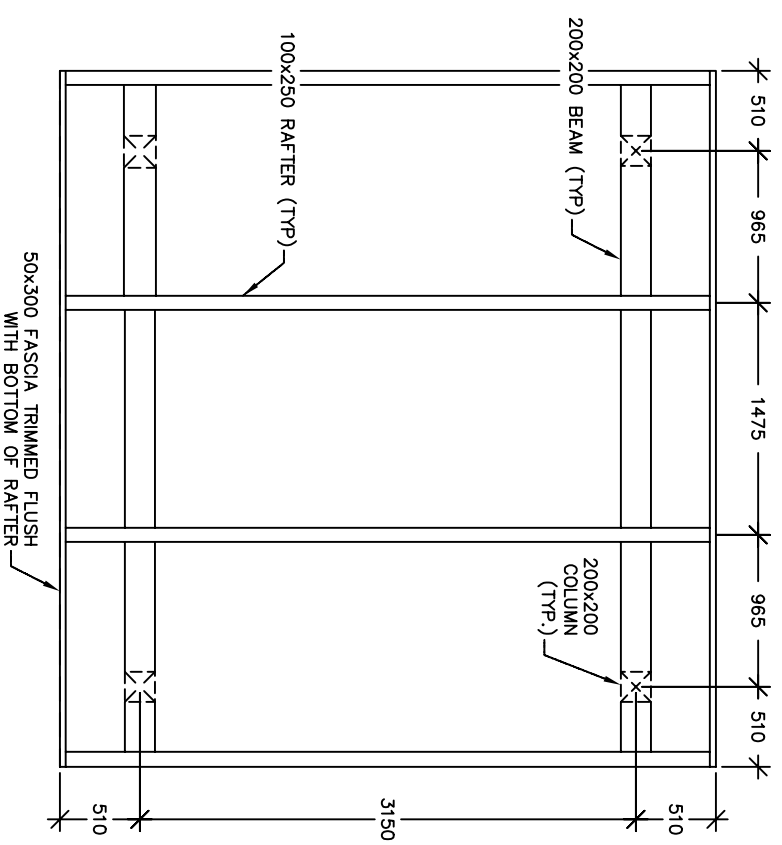
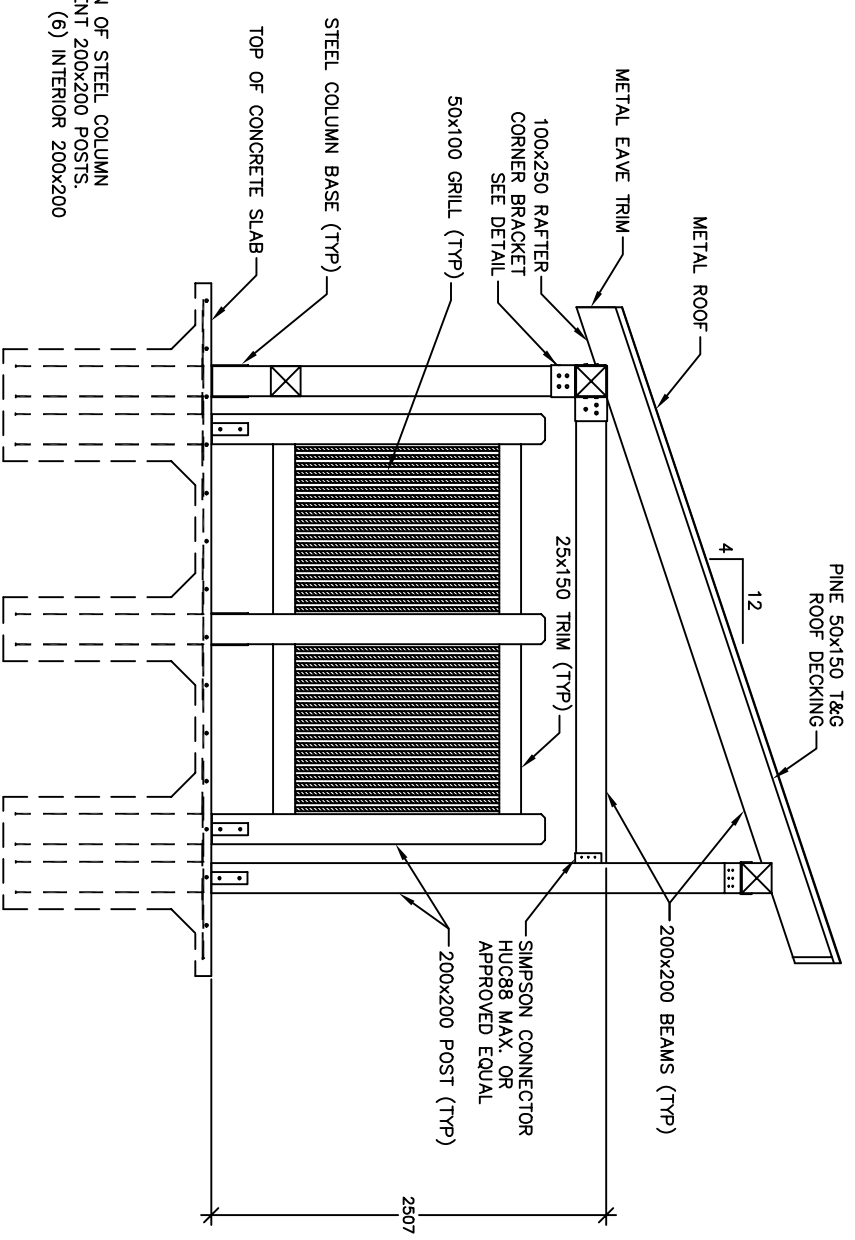


- NOTES:
1. ALTERNATE ORIENTATION OF STEEL COLUMN BASES BETWEEN ADJACENT 200x200 POSTS.
 2. CHAMFER TOP EDGES OF (6) INTERIOR 200x200 POSTS 1" @ 45°.



ORIENTATION KIOSK
PLAN & PROFILE

